



LOWER MINNESOTA RIVER WATERSHED DISTRICT

Executive Summary for Action

Lower Minnesota River Watershed District Board of Managers Meeting
Wednesday March 20, 2019

Agenda Item

Item 5. D. - Chimney Pines 2019 Cost Share Application

Prepared By

Linda Loomis, Administrator

Summary

The LMRWD received an application for its 2019 Cost Share Program from the Chimney Pines Homeowners Association in Eden Prairie. This is the fourth phase of a project that planted a buffer of native plants around a storm water pond that serves the Chimney Pines subdivision. The stormwater pond flows into second pond before flowing to the Minnesota River through a series of underground storm water conveyances.

This year the project is larger than previous years (it is Section 1 on the map). This area receives the most sun of any of the areas and is the largest area of all the project phases. The Homeowners Association would like to get started as soon as conditions allow. Volunteer labor will be used as the match for the grant program.

Attachments

2019 Chimney Pines Cost Share Application
Cost Share Worksheet

Recommended Action

Motion to approve Cost Share Application for Chimney Pines Homeowners Association.

Lower Minnesota River Watershed District

Type or handwrite your answers on this form. (For questions, contact Linda Loomis at naiadconsulting@gmail.com or call 763-545-4659.)

Mail the completed application to:
Lower Minnesota River Watershed District
c/o/Linda Loomis, Administrator
112 E. Fifth St.,
Chaska, MN 55318

or Email to:
Linda Loomis, Administrator
naiadconsulting@gmail.com

2019 Cost Share Incentive and Water Quality Restoration Program Application

1) Name of Organization or Individual Applying for Grant (to be named as Grantee):

Chimney Pines Homeowners Association

2) Project Address (street, city and ZIP code):

Spyglass Drive, Eden Prairie, MN 55347

3) Name & Address of Contact Person if different from above:

Judy Berglund

4) Contact Information (daytime and evening phone numbers, email address):

Email: Judy@Berglund.com

Telephone: 952-975-1960

5) Project Type (Best Management Practice [BMP] or Investigation [Study]):

Best Management Practice

6) Project Description: (Use Separate Page if necessary)

- see separate page -

7) How does the project meet the purpose of the LMRWD Cost Share Incentive and Water Quality Restoration Program?

It is our hope to improve the water quality through the BMP implementation of our plan to remove invasive species and to plant vegetation that will mitigate erosion and minimize the rate and volume of water from adjacent land and sedimentation to the Minnesota River. The pond serves as an extended detention pond that collects water from both street drains and surrounding land which is then transferred to a drain system that makes its way to the Minnesota River.

8) How did you find out about the grant?

From Leslie Stovring, Environmental Coordinator for City of Eden Prairie

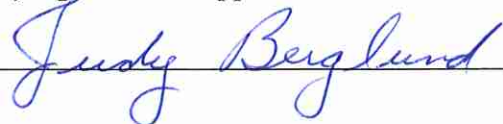
9) Partners (provide contact information for each partner and his/her expected contribution to the project):

Homeowners that backup to the pond area, eighteen homes total. Each homeowner will be asked to contribute their time toward established work days to help complete the overall plan.

10) Grant Funding Request

\$5,703.32

11) Signature of Applicant:



Date: ~~April~~ March 14, 2019

Chimney Pines Homeowners Association

Pond Area Improvement Project Narrative

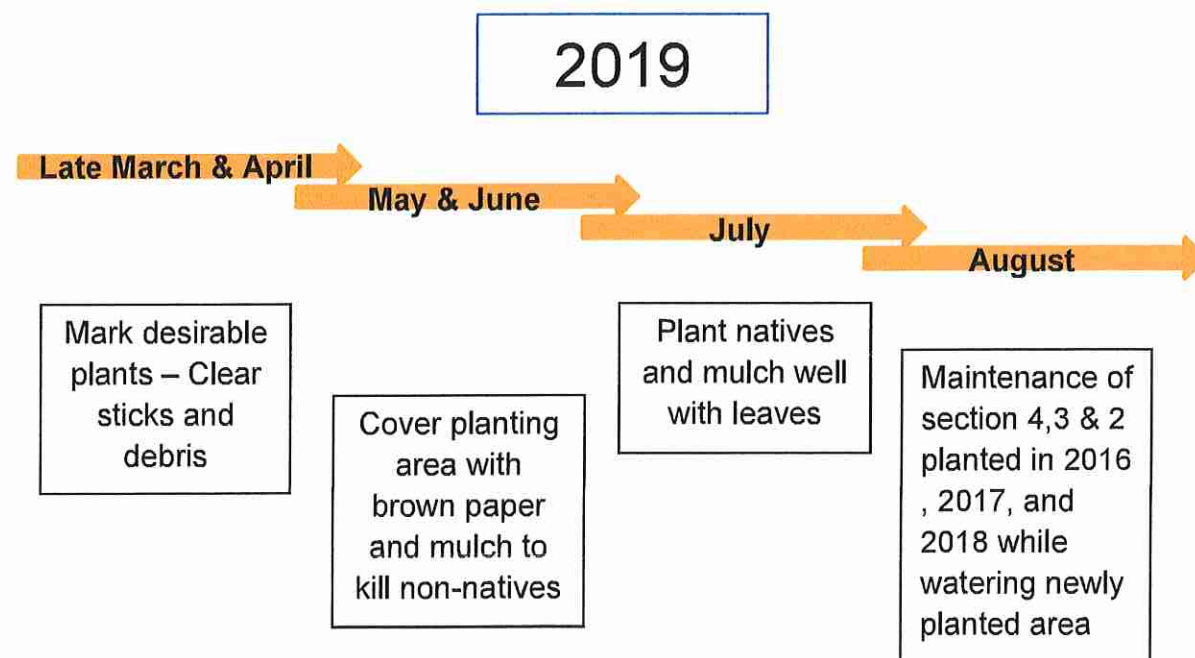
Chimney Pines Homeowners Association of Eden Prairie has eighteen homes backing up to an extended retention pond. Spyglass Drive has fifty homes, in total, in which the driveways and front lawns that have runoff water that is directed to street drains most of which makes its way into the pond and ultimately into the Lower Minnesota River. The goal of this project is to have a native plant buffer strip surrounding the pond in order to improve water quality and clarity with sediment control and preventing soil erosion. Native plants will absorb runoff from backyards before it reaches the extended detention pond. The choice of native plants should also create habitat for butterflies, dragonflies, pollinators, birds, snakes, toads, frogs, salamanders, and other native wildlife.

Chimney Pines Homeowners Association

Pond Area Improvement Project Work Plan with Timeline

Because this is such a large area, the volunteer committee of seven households that back up to the extended retention pond took the suggestion of consultant Heather Holm and divided the area into four workable sections. We completed work on section four (4) in 2016, section two (2) in 2017, section three (3) in 2018, and will be working on the final section one (1) in 2019. Attached are the suggestions to the committee made by Heather Holm.

Section one (1) is 1000 feet long and an average of 40 feet wide, resulting in an area of 40,000 square feet. We will identify and mark plants worth saving and will be clearing Buckthorn, Garlic Mustard, Canadian Goldenrod, Burning Nettle, Creeping Charlie, and other undesirable invasive species or non-natives in late March through mid-May. As we clear areas we will be laying painter's paper as a barrier and mulching the area with chopped maple leaves collected from the front lawns last fall. July we plan to add plant material suggested by Heather Holm. August will be maintaining watering for new plantings and maintenance of section four (4) planted in 2016, section two (2) planted in 2017, and section three (3) planted in 2018. We plan to finish this section by late July 2019.



Chimney Pines Homeowner Association
Pond Area Improvement Project Plant List
ZONE 1 – 2019

<i>Plant Name</i>	<i>18 Count Flat</i>	<i>Price</i>
Great Blue Lobelia	2 Flats	\$57.90
Monkey Flower	2 Flats	\$57.90
Ohio Spiderwort	2 Flats	\$57.90
Swamp Milkweed	3 Flats	\$86.85
St. John's Wort	1 Flat	\$29.95
New England Aster	1 Flat	\$28.95
Sensitive Fern	1 Flat	\$38.95
Prairie Blazing Star	3 Flats	\$86.85
Maidenhair Fern	3 Flats	\$116.85
Jacob's Ladder	5 Flats	\$144.75
Columbine	1 Flat	\$28.95
Virginia Bluebells	1 Flat	\$28.95
Celadine Poppy	3 Flats	\$86.85
Butterfly Milkweed	4 Flats	\$115.80
Prairie Phlox	3 Flats	\$86.85
Black Eye Susan	3 Flats	\$86.85
Spotted Bee Balm	2 Flats	\$57.90
Lupines	1 Flat	\$28.95
Wild Petunias	2 Flats	\$57.90
Prairie Onion	2 Flats	\$57.90
Prairie Coreopsis	2 Flats	\$57.90
Blanket Flower	3 Flats	\$86.85
Pasqual Flower	2 Flats	\$57.90
Prairie Smoke	1 Flat	\$28.95
Hoary Vervain	1 Flat	\$28.95
Purple Prairie Clover	1 Flat	\$28.95
Midland Shooting Star	2 Flats	\$57.90
June Grass	2 Flats	\$57.90
Pennsylvania Sedge	4 Flats	\$115.80
Little Bluestem	4 Flats	\$115.80
Prairie Dropseed	4 Flats	\$115.80
Pussy Willow	1 Shrub	\$49.99
Red Dogwood	2 Shrubs	\$42.90
Service Berry	1 Tree	\$129.99
Common Witch Hazel	1 Tree	\$39.99
<i>Delivery of Plants</i>		\$50.00
Subtotal	63	\$2,409.32
Builder's Paper 35" x 140'	7	\$82.00
Yard Waste Paper Bags (5 count)	15	\$35.00
Roundup Weed and Grass	1	\$27.00
Subtotal		\$144.00
Labor		
Work Days (in hours at \$18 per hour)		
(1 session with 8 people for 2 hours)	16 Hours	\$288.00
(2 sessions with 7 people for 3 hours)	42 Hours	\$756.00
(6 sessions with 4 people for 3 hours)	72 Hours	\$1,296.00
(5 sessions with 3 people for 3 hours)	45 Hours	\$810.00
Subtotal	175 Hours	\$3,150.00
TOTAL		\$5,703.32



SPYGLASS DRIVE, EDEN PRAIRIE, MN - RETENTION POND PLANTING

PLANT INVENTORY	SECTION
<i>Invasive or non-native species - Remove</i>	
<i>Morus alba</i> , White mulberry	3
<i>Lonicera</i> , Honeysuckle sp.	2
<i>Rhamnus cathartica</i> , European buckthorn (seedlings)	2,3
<i>Torilis japonica</i> , Japanese hedge parsley	3
<i>Silene vulgaris</i> , Bladder campion	1
<i>Linaria vulgaris</i> , Butter and eggs or common toadflax	3
<i>Convolvulus arvensis</i> , Field bindweed	3
<i>Leonurus cardiaca</i> , Motherwort	2,3
<i>Rumex crispus</i> , Curly dock	1
<i>Coronilla varia</i> , Crown vetch	3,4
<i>Glechoma hederacea</i> , Creeping charlie	1-4
<i>Cirsium arvense</i> , Canada thistle	1
<i>Undesirable native species - Remove</i>	
<i>Solidago canadensis</i> , Canada goldenrod	1,2
<i>Hackelia virginiana</i> , Virginia stickseed	2,3,4
<i>Laportea canadensis</i> , Wood nettle	3
<i>Urtica dioica</i> , Stinging nettle	1,4
<i>Vitis riparia</i> , Riverbank grape	1-4
<i>Desirable native species - Keep/Release</i>	
<i>Panicum virgatum</i> , Switch grass	1
<i>Asclepias syriaca</i> , Common milkweed	1
<i>Onoclea sensibilis</i> , Sensitive fern	1, move to 3
<i>Zizia aurea</i> , Golden alexanders	2
<i>Baptisia sp.</i> , Wild indigo	4
<i>Thalictrum dasycarpum</i> , Tall meadowrue	1,2,4
<i>Ageratina altissima</i> , White snakeroot	2-4



SPYGLASS DRIVE, EDEN PRAIRIE, MN - RETENTION POND PLANTING

PLANT INVENTORY	SECTION
<i>Desirable native species - Keep/Release</i>	
<i>Arisaema triphyllum</i> , Jack-in-the-pulpit	2,3
<i>Symphotrichum</i> spp., Asters, various species	1,2
<i>Silphium perfoliatum</i> , Cup plant	3, move to 1
<i>Osmorhiza longistylis</i> , Long-styled sweet cicely	3
<i>Asarum canadense</i> , Wild ginger	4
<i>Polygonatum</i> sp., Solomon's seal	4, move to 2,3
<i>Cornus sericea</i> , Red osier dogwood	1
<i>Physalis</i> sp., Ground cherry	1,4
<i>Andropogon gerardii</i> , Big bluestem	1
<i>Monarda fistulosa</i> , Wild bergamot	1,2
<i>Hypericum pyramidatum</i> , Great St. John's wort	1
<i>Eutrochium maculatum</i> s, Spotted joe pye weed	1
<i>Iris versicolor</i> , Blue flag iris	1
<i>Physalis</i> sp., Ground cherry	1,4
<i>Parthenocissus inserta</i> , Woodbine	2-4



SPYGLASS DRIVE, EDEN PRAIRIE, MN - RETENTION POND PLANTING

PERENNIALS TO ADD - Water's Edge	SECTION
<i>Physostegia virginica</i> , Obedient plant	1
<i>Anemone canadensis</i> , Canada anemone	1,2,4
<i>Chelone glabra</i> , White turtlehead	1,2,4
<i>Eupatorium perfoliatum</i> , Common boneset	1
<i>Verbena hastata</i> , Blue vervain	1
<i>Lobelia siphilitica</i> , Blue Lobelia	1,2,4
<i>Veronicastrum virginicum</i> , Culver's root	1
<i>Vernonia fasciculata</i> , Common ironweed	1,2

SHRUBS TO ADD - Water's Edge	SECTION
<i>Sambucus canadensis</i> , American elderberry	1
<i>Cephalanthus occidentalis</i> , Buttonbush	1
<i>Spiraea alba</i> , Meadowsweet	1
<i>Salix discolor</i> , Pussy willow	1,2

PERENNIALS TO ADD - Shade	SECTION
<i>Mertensia virginica</i> , Virginia bluebells	2-4
<i>Geranium maculatum</i> , Wild geranium	2-4
<i>Maianthemum racemosum</i> , False Solomon's seal	2-4
<i>Polemonium reptans</i> , Jacob's ladder	2-4
<i>Aralia racemosa</i> , Spikenard	2-4
<i>Solidago flexicaulis</i> , Zigzag goldenrod	2-4
<i>Eurybia macrophylla</i> , Large-leaved aster	2-4
<i>Campanula americana</i> , Tall bellflower	2-4
<i>Thalictrum dioicum</i> , Early meadowrue	2-4
<i>Aquilegia canadensis</i> , Wild columbine	2-4



SPYGLASS DRIVE, EDEN PRAIRIE, MN - RETENTION POND PLANTING

SHRUBS TO ADD - Shade	SECTION
<i>Diervilla lonicera</i> , Bush honeysuckle	2-4
<i>Viburnum lentago</i> , Nannyberry	2-4
<i>Viburnum rafinesquianum</i> , Downy Arrowwood Viburnum	2-4
<i>Corylus americana</i> , American hazelnut	2-4

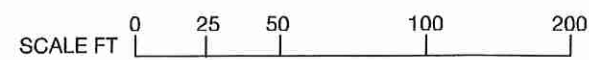
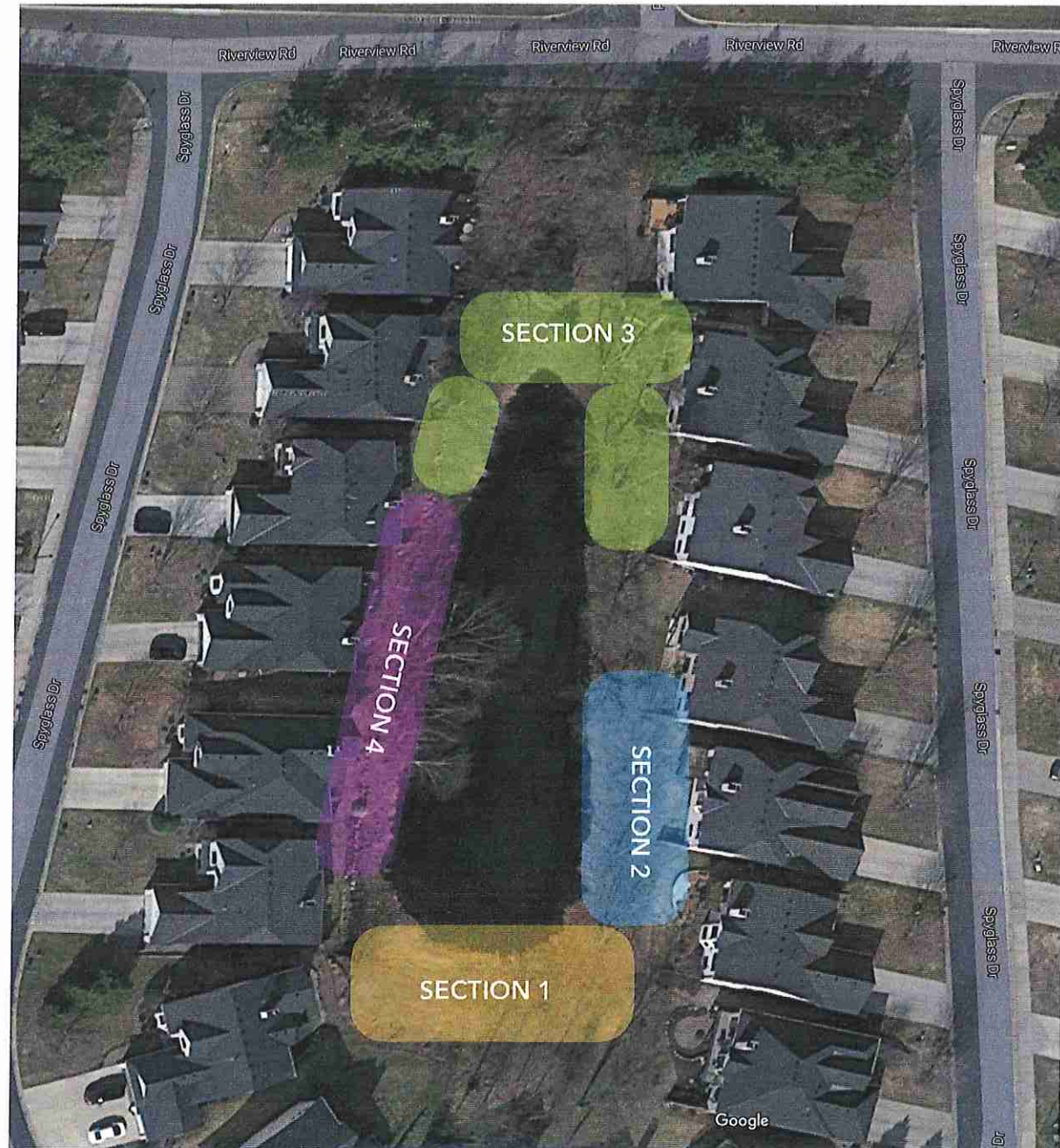
GRASSES AND SEDGES TO ADD	SECTION
<i>Schizachyrium scoparium</i> , Little bluestem	1
<i>Carex spregelli</i> , Sprengel's (long-beaked) sedge	2-4
<i>Carex pensylvanica</i> , Pennsylvania sedge	2-4

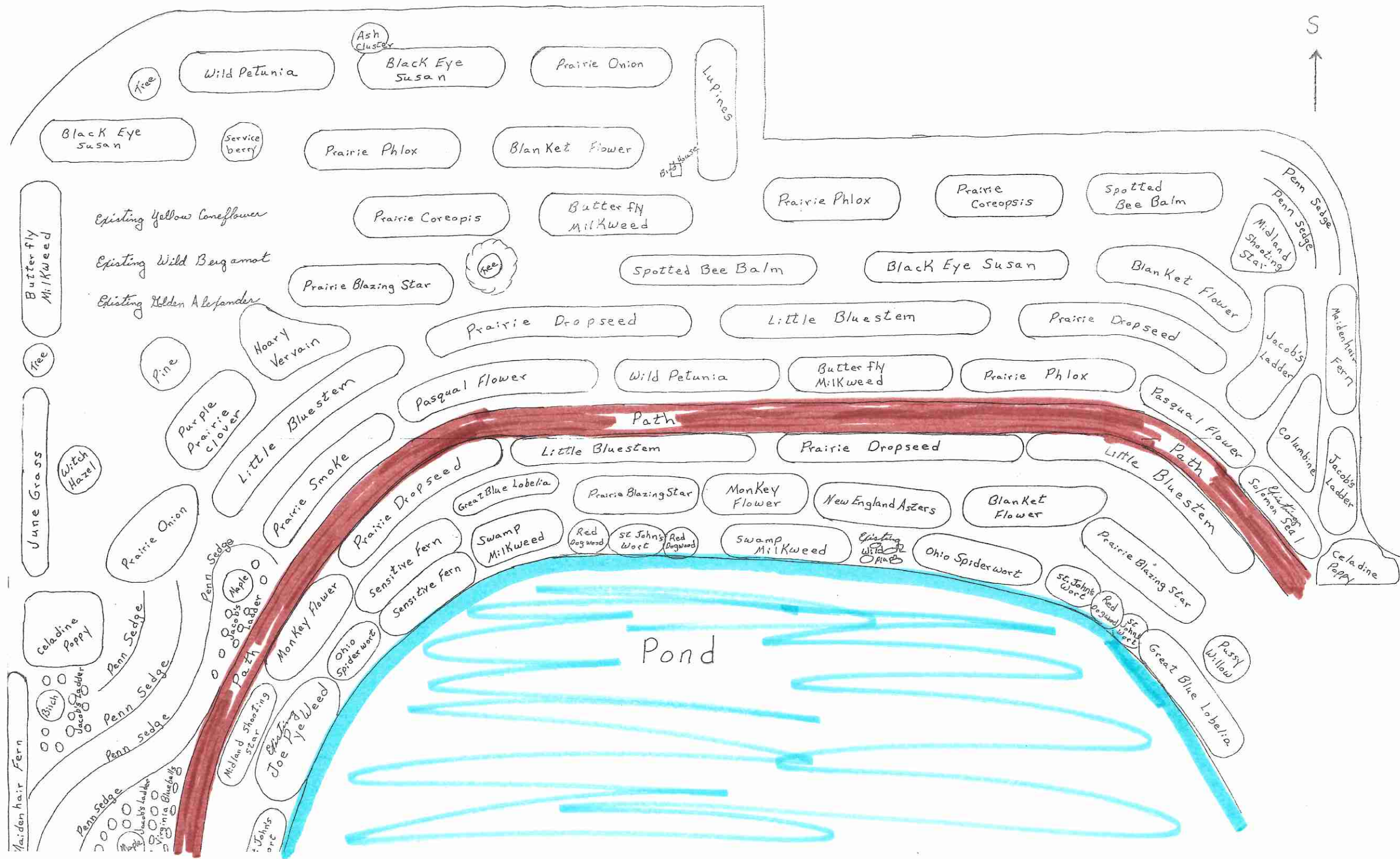
Native Plant Nurseries

- Natural Shore Technologies, Maple Plain, MN www.naturalshore.com
- Prairie Restorations Inc, Princeton, MN www.prairieresto.com
- Outback Nursery, Hastings, MN www.outbacknursery.com
- Ecoscapes, Burnsville, MN www.ecoscapes1.com
- Landscape Alternatives, Schafer, MN www.landscapealternatives.com
- Prairie Moon Nursery, Winona, MN www.prairiemoon.com



SPYGLASS DRIVE, EDEN PRAIRIE, MN - RETENTION POND PLANTING





Wild Petunia

Ash Cluster
Black Eye Susan

Prairie Onion

Lupines

Black Eye Susan

Service berry

Prairie Phlox

Blanket Flower

Bird House

Prairie Phlox

Prairie Coreopsis

Spotted Bee Balm

Penn Sedge
Midland Shooting Star

Existing Yellow Coneflower

Prairie Coreopsis

Butterfly Milkweed

Existing Wild Bergamot

Prairie Blazing Star

Spotted Bee Balm

Black Eye Susan

Blanket Flower

Existing Golden Alexander

Prairie Dropseed

Little Bluestem

Prairie Dropseed

Butterfly Milkweed

Tree

Pine

Hoary Vervain

Pasqual Flower

Wild Petunia

Butterfly Milkweed

Prairie Phlox

Jacob's Ladder

Maidenhair Fern

June Grass

Witch Hazel

Purple Prairie Clover

Little Bluestem

Prairie Smoke

Prairie Dropseed

Little Bluestem

Prairie Dropseed

Little Bluestem

Columbine

Jacob's Ladder

Prairie Onion

Penn Sedge

Mon Key Flower

Sensitive Fern

Great Blue Lobelia

Prairie Blazing Star

Monkey Flower

New England Aster

Blanket Flower

Prairie Blazing Star

Solomon Seal

Celadine Poppy

Celadine Poppy

Penn Sedge

Penn Sedge

Maple

Jacob's Ladder

Ohio Spiderwort

Sensitive Fern

Swamp Milkweed

Red Dogwood

St John's Wort

Red Dogwood

Swamp Milkweed

Existing Wild Oregano

Ohio Spiderwort

St John's Wort

Red Dogwood

St John's Wort

Pussy Willow

Maidenhair Fern

Bitch

Jacob's Ladder

Penn Sedge

Penn Sedge

Midland Shooting Star

Joe Yeweed

St John's Wort

Joe Yeweed

Joe Yeweed

Joe Yeweed

Joe Yeweed

Joe Yeweed

Joe Yeweed

Joe Yeweed

Joe Yeweed

Joe Yeweed

Joe Yeweed

Joe Yeweed

Joe Yeweed

Joe Yeweed

Joe Yeweed

Joe Yeweed

Pond

Great Blue Lobelia

2019 Cost Share Worksheet - Chimney Pines Homeowners Association

Labor Costs (Contractors, Consultants, In-Kind Labor)

Service Provider	Task	# Hours	Rate/Hour	Requested Funds from LMRWD	Matching/In-Kind Funds	Total
Volunteer	Clearing, gubbing and planting	175	\$12.00		\$ 2,100.00	\$ 2,100.00
Total:				\$ -	\$ 2,100.00	\$ 2,100.00

Project Materials

Material description	Unit Cost	Total # of Units	Requested funds from LMRWD	Matching/In-Kind Funds	Total
Plant Materials			\$ 2,100.00	\$ 309.32	\$ 2,409.32
Craft paper, yard waste bags, Round-Up			\$ -	\$ 144.00	\$ 144.00
					\$ -
					\$ -
					\$ -
Total:			\$ 2,100.00	\$ 453.32	\$ 2,553.32

Total Requested Funds from LMRWD*:	\$ 2,100.00 (A)
Total Match/In-Kind Funds:	\$ 2,553.32 (B)
Project Total:	\$ 4,653.32 (C)

*Please note: total requested funds (A) cannot be more than 50% of the Project Total (C)