



LOWER MINNESOTA RIVER WATERSHED DISTRICT

Executive Summary for Action

Lower Minnesota River Watershed District Board of Managers Meeting
Wednesday, April 16, 2025

Agenda Item

Item 6. B. - Metro Pond Maintenance Group A2 Project (LMRWD No. 2024-021)

Prepared By

Linda Loomis, Administrator

Summary

The Minnesota Department of Transportation (MnDOT) plans to conduct maintenance of several stormwater ponds. Young Environmental Consulting Group has reviewed the permit application and associated exhibits and recommends conditional approval of a permit.

Attachments

Technical memorandum – Metro Pond Maintenance Group A2 Project (LMRWD No. 2024-021), dated April 9 2025

Recommended Action

Motion to conditionally approve a permit for Metro Pond Maintenance Group A2 Project (LMRWD No. 2024-021) contingent upon receipt of the following:

- Copy of the NPDES construction stormwater permit.
- Name, address and telephone number of the person(s) responsible for erosion control inspections and maintenance.
- Name, address and telephone number(s) of all contractors undertaking land-disturbing activities as part of the project.
- Final staging locations.
- Final designation of an individual who will remain liable to the LMRWD for performance under rule B from the time the permitted activities commence until vegetative cover is established and the LMRWD has certified satisfaction with erosion and sediment control requirements.

Technical Memorandum



To: Linda Loomis, Administrator
Lower Minnesota River Watershed District

From: Rachel Kapsch, Water Resources Scientist
Gabrielle Campagnola, Water Resources Engineer (Barr Engineering)

Date: April 9, 2025

Re: Metro Pond Maintenance Group A2 Project (LMRWD No. 2024-021)

The Minnesota Department of Transportation (MnDOT) has applied for an individual project permit from the Lower Minnesota River Watershed District (LMRWD) to conduct repairs and maintenance on MnDOT stormwater ponds in 2025. There are three locations slated for pond maintenance in the LMRWD:

1. **Site 8** is located on Nicols Road, to the east of Trunk Highway (TH) 77 in Eagan, MN. The associated MnDOT pond number is 2319059.
2. **Site 9** is underneath the Minnesota River Bridge in Burnsville, MN. The associated MnDOT pond numbers are 2319135, 2319136, and 2319137.
3. **Site 11** is located northeast of TH 62 and MN 55 in Fort Snelling, MN. The associated MnDOT pond numbers are 2318947 and 2318948.

The applicant's engineer, TKDA, submitted the permit application, associated application exhibits, and site plans for the Metro Pond Maintenance Group A2 project (Pond Maintenance project).

The project will disturb approximately 9.84 acres within the LMRWD. The project will disturb 7.96 acres at Site 8, a total of 1.29 acres at Site 9 (Wet Pond A: 0.46 acres, Wet Pond B: 0.41 acres, and Wet Pond C: 0.42 acres), and a total of 0.59 acres at Site 11 (Wet Pond A: 0.29 acres and Wet Pond B: 0.30). There will be no new or reconstructed impervious area as part of the Pond Maintenance project.

General pond maintenance activities include pond dewatering, clearing and grubbing of cattails and vegetation, and excavation of accumulated sediment and muck. At Site 8, there was previously a slope washout at the existing apron outlet discharging stormwater from TH 77. The proposed Pond Maintenance project will restore this slope to its original condition and extend the apron outlet to the normal water level (NWL) to prevent future washout. A spillway berm is also proposed at Site 8. This will create a forebay to allow sediment to settle out of stormwater before discharging to the Minnesota River. At Site 9, the berms separating the three ponds are being restored to their original condition. Wet Pond A has been negatively impacted by off-road vehicle traffic, which has worn down the berm, requiring more fill to restore the berm than the other ponds at Site 9. Boulders are being placed along Wet Pond A to prevent future vehicle traffic from entering the pond area. At Site 11, stream bank restoration and slope repair will occur on the southeastern side of the pond. Spillway berm repair will also be conducted at Site 11.

Additional site maintenance activities include:

- Site 8 activities include cleaning out sediment and organics, replacing 100 feet of corrugated steel pipe (CSP) and an outlet structure gate valve, removing perimeter trees, and installing geotextile filter type 3 and 4, and Class II and IV riprap.
- Site 9 activities include cleaning out sediment, muck, and cattails, replacing scupper energy dissipater, outlet structures, and pipes, restoring berms, and installing geotextile filter type 3 and Class II riprap.
- Site 11 activities include cleaning out sediment, organics and cattails, repairing spillway berm, replacing outlet structure, removing perimeter trees, and installing geotextile filter type 3 and 4, and Class II and III riprap.

The project is located within a High-Value Resource Area (HVRA), the Minnesota River Floodplain and the Steep Slopes Overlay District (SSOD). The applicant proposes to begin maintenance activities in spring 2025. The project triggers LMRWD Rule B – Erosion and Sediment Control and Rule C – Floodplain and Drainage Alteration. An individual permit is required for the project elements proposed by MnDOT within the LMRWD and is subject to LMRWD permitting review.

SUMMARY

Project Name: Metro Pond Maintenance Group A2 Project

Purpose: Perform pond maintenance activities such as sediment excavation, vegetation removal, and repair to pond slopes and berms.

Project Size:

Site Name	Pond Name	Area Disturbed (acres)
Site 8	Wet Pond B	7.96
Site 9	Wet Pond A	0.46
	Wet Pond B	0.41
	Wet Pond C	0.42
Site 11	Wet Pond A	0.29
	Wet Pond B	0.30

Location: Site 8: TH 77 at Nicols Road

Site 9: TH 77 at Minnesota River Bridge

Site 11: MN 55 at Hiawatha Trail

LMRWD Rules: Rule B—Erosion and Sediment Control
Rule C—Floodplain and Drainage Alteration

Recommended Board Action: Conditional approval

DISCUSSION

The LMRWD received the following documents for review:

- The following documents were received on December 11, 2024:
 - LMRWD Online Permit Application
 - MnDOT Pond Preservation Sites Map
 - Plan Set
- 100% Plan Set; received December 18, 2024.
- MnDOT (Jason Swenson) Comments; received December 20, 2024.
- The following documents were received on January 16, 2025:
 - TKDA Comments
 - Revised LMRWD Online Permit Application
 - Twin Cities Model Boat Club Permit from MnDOT
 - Floodplain Calculations and Cross Sections
 - Authorization of Agent Form
 - Revised 100% Plans
 - Site 11 Wetland Impacts Figure
- Revised Floodplain Calculations; received January 30, 2025.
- The following documents were received on February 25, 2025:
 - Revised Floodplain Calculations and Cross Sections
 - Minnesota “No-Rise” Certification (including Original Construction Plan Set, dated September 1980)
 - Revised 100% Plans
- Wetland Conservation Act (WCA) Public Road Project Notification; received March 7, 2025.

The application was deemed complete on March 5, 2025, and the documents received provide the minimum information necessary for permit review.

Rule B—Erosion and Sediment Control

The LMRWD regulates land-disturbing activities that affect one acre or more under Rule B. The proposed project would disturb approximately 9.84 acres within the LMRWD boundary. The applicant has provided an erosion and sediment control plan and a Stormwater Pollution Prevention Plan (SWPPP). Temporary erosion and sediment control measures include sediment control logs, silt fencing, inlet protection, random riprap, culvert end controls, and stabilized construction exits. Disturbed areas are to be seeded to achieve final stabilization.

The project generally complies with Rule B, but a copy of the National Pollutant Discharge Elimination System (NPDES) construction stormwater permit, contact information for contractors performing erosion and sediment control inspections and maintenance, contact information for contractors performing land-disturbing activities, specification of final staging areas, and a designated representative to remain liable to the LMRWD from the time the permitted activities commence until vegetative cover is established are needed before the LMRWD can issue a permit.

Rule C—Floodplain and Drainage Alteration

The LMRWD requires documentation that any proposed floodplain fill will not cause an increase in 100-year water surface elevations. Site 8 and Site 9 are located within the Minnesota River 100-year floodplain, per Flood Insurance Rate Map (FIRM) Panel 27037C0080E (effective December 2, 2011) and Figures 2 and 3.

The proposed project will result in cut below the normal water level of the ponds (sediment removal) and fill above the normal water level (slope repair, berm repair, etc.). Changes to the water quality volume/dead storage (below the normal water level) are reported in Table 1. These changes will not be discussed in further detail because altering storage below the normal water level does not impact the floodplain storage of the pond and thereby does not affect the resulting 100-year water level.

The project proposes 95 cubic yards of cut and 642 cubic yards of fill, resulting in 547 cubic yards of net fill between the normal water level and the 100-year water surface elevation of the Minnesota River. The work at Site 8 includes installation of a spillway berm and slope restoration resulting in 61 cubic yards of cut and 48 cubic yards of fill (net cut of 13 cubic yards). The work at Site 9 includes berm restoration resulting in 34 cubic yards of cut and 594 cubic yards of fill (net fill of 560 cubic yards). The work at Site 9 does not include compensatory storage.

Berms at Site 9 were originally constructed in the 1980s. The applicant's engineer submitted original construction plans for the Site 9 ponds and berms. Per the original construction plans, the proposed pond maintenance activities will restore Site 9 ponds and berms to their original condition. The applicant also submitted proposed project plans, cut and fill calculations and cross sections for activities within the Minnesota River 100-year floodplain, and a signed no-rise certification. The original plan set validates that all construction activities and fill occurring as part of the proposed project is to restore the original construction conditions of 1980, therefore confirming no change in the 100-year water surface elevation. The project complies with Rule C.

Table 1. Floodplain cut and fill calculations (by site)

Site	Location	Pond Name	Pond Number	Between Pond Bottom and NWL (Water Quality Volume/Dead Storage)		Between NWL and Below 100-Yaer Floodplain Elevation (Floodplain Storage)	
				Cut	Fill	Cut	Fill
				Yd³	Yd³	Yd³	Yd³
8	TH 77 at Nicols Rd	Wet Pond B	2319059	11307	2410	61	48
9	TH 77 at Minnesota River Bridge	Wet Pond A	2319135	94	32	25	340
		Wet Pond B	2319136	67	4	5	125
		Wet Pond C	2319137	157	3	4	129
Totals				11,625	2,449	95	642
Net Cut (Yd³)				9,176		-547	

Recommendations

Based upon the review of the project, we recommend conditional approval of the Metro Pond Maintenance Group A2 Project contingent on receipt of the following:

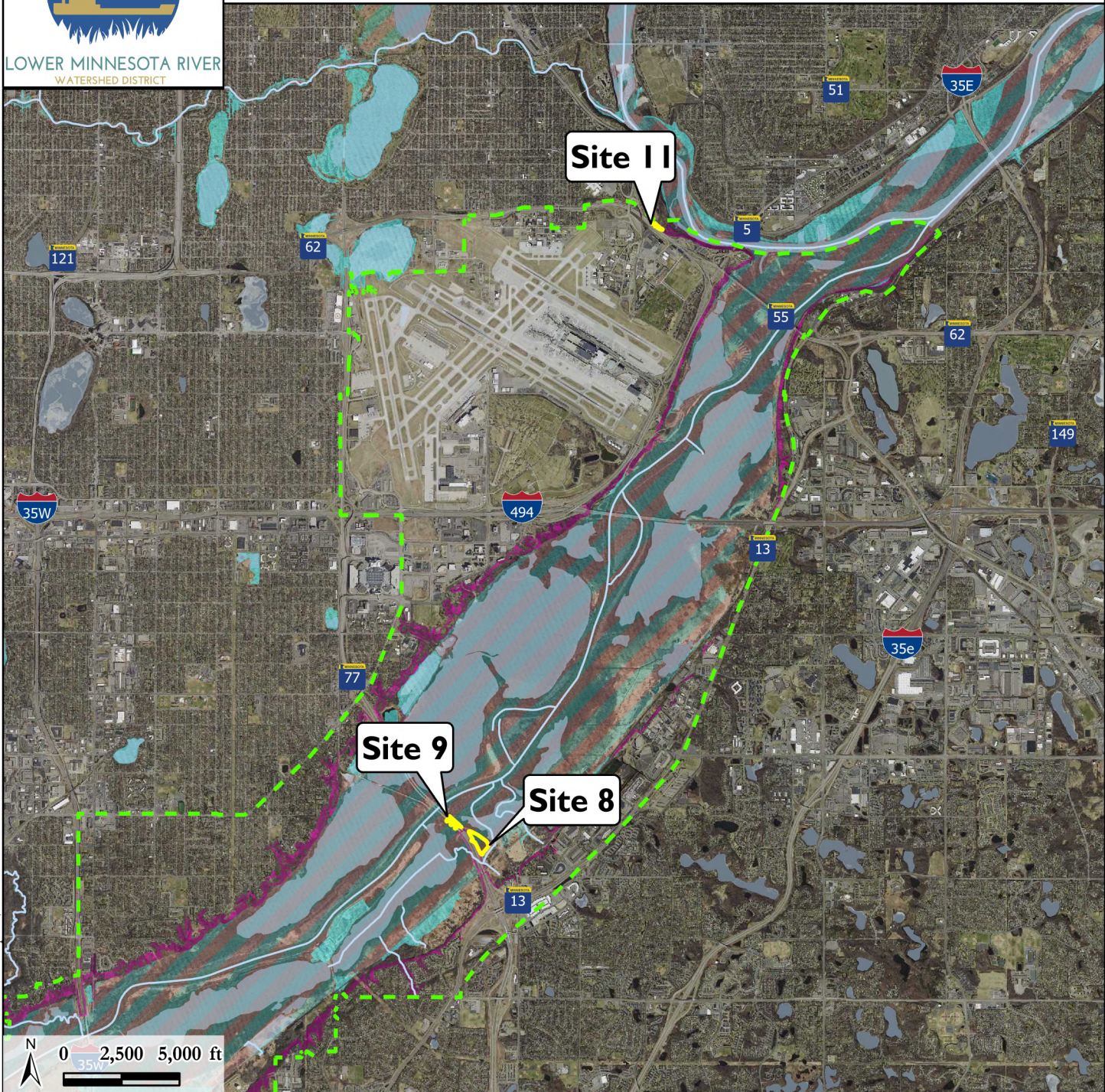
- Copy of the NPDES construction stormwater permit.
- Name, address, and phone number of the person(s) responsible for erosion control inspections and maintenance.
- Name, address, and phone number(s) of all the contractors undertaking land-disturbing activities as part of the project.
- Final staging locations.
- Final designation of an individual who will remain liable to the LMRWD for performance under Rule B from the time the permitted activities commence until vegetative cover is established and the LMRWD has certified satisfaction with erosion and sediment control requirements.

Attachments

- Figure 1—Metro Pond Maintenance Group A2 Project Locations
- Figure 2—Metro Pond Maintenance Group A2 Site 8
- Figure 3—Metro Pond Maintenance Group A2 Site 9
- Figure 4—Metro Pond Maintenance Group A2 Site 11



Figure I: Metro Pond Maintenance Group A2 Project Locations
LMRWD No. 2024-021



Legend

- | | | | |
|--|--------------------|--|------------------------------|
| | Project Location | | Steep Slope Overlay District |
| | LMRWD Boundary | | 100-yr Floodplain |
| | Public Waters | | Floodway |
| | Public Waterbodies | | |

LMRWD Watershed Location Map

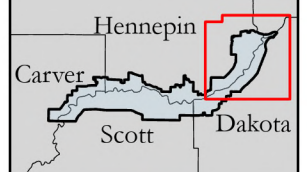
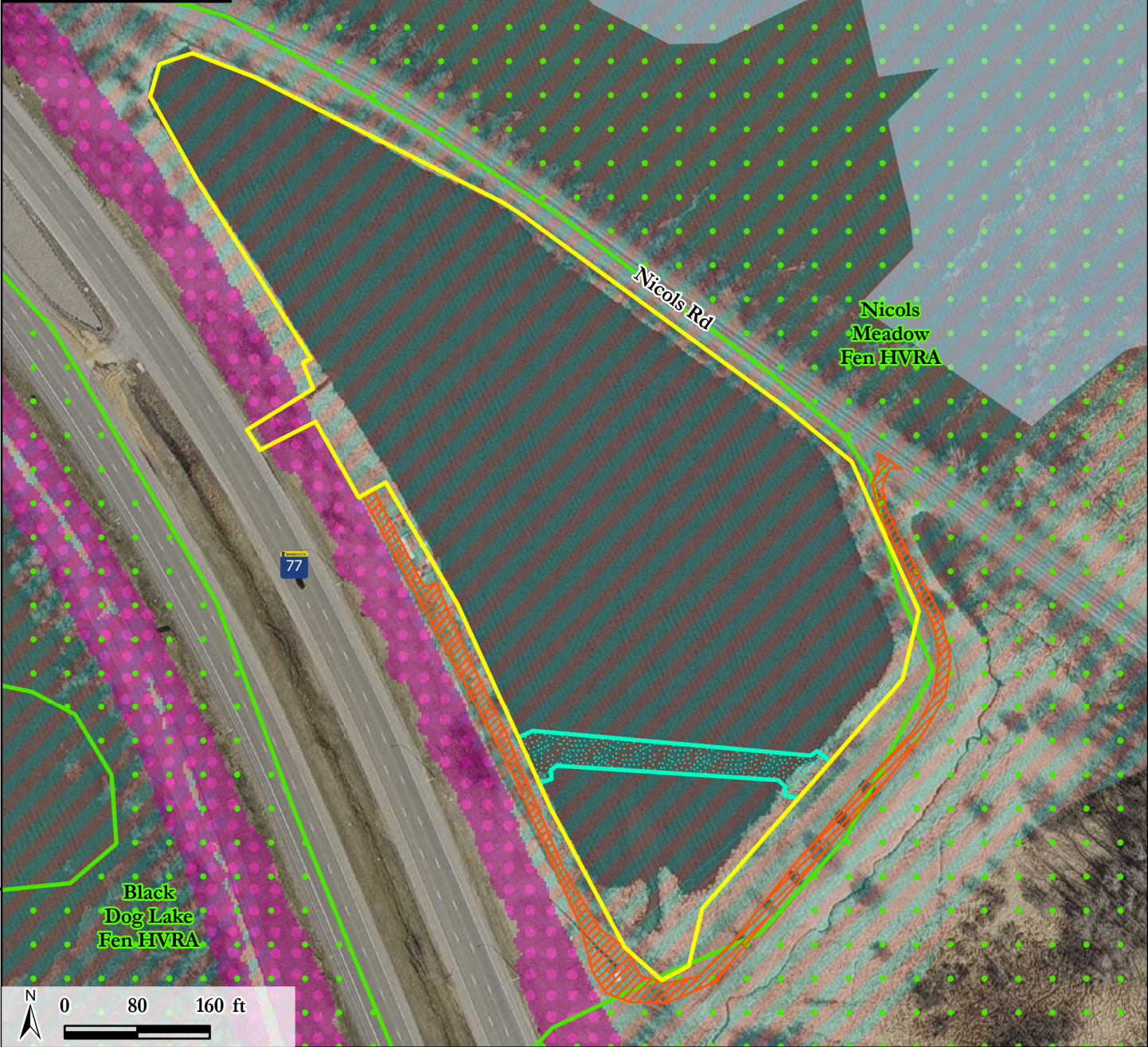




Figure 2: Metro Pond Maintenance Group A2 Site 8
LMRWD No. 2024-021



Legend

- | | |
|--|--|
|  Project Location |  High Value Resource Area |
|  Access Route |  Steep Slope Overlay District |
|  Spillway Berm |  Floodway |
|  Public Waterbodies | |

LMRWD Watershed Location Map

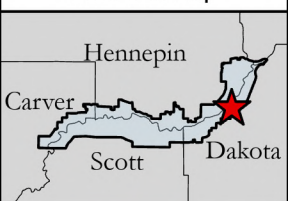




Figure 3: Metro Pond Maintenance Group A2 Site 9
LMRWD No. 2024-021



Legend

- Project Location
- Access Route
- Public Waterbodies
- High Value Resource Area
- Steep Slope Overlay District
- Floodway

LMRWD Watershed Location Map





Figure 4: Metro Pond Maintenance Group A2 Site 11
LMRWD No. 2024-021



Legend

- Project Location
- Trail
- Stream Bank Restoration and Slope Repair
- Access Route
- Steep Slope Overlay District

LMRWD Watershed Location Map

