



LOWER MINNESOTA RIVER WATERSHED DISTRICT

Executive Summary for Action

Lower Minnesota River Watershed District Board of Managers Meeting

Wednesday, May 18, 2022

Agenda Item

Item 6. G. – Education and Outreach

Prepared By

Linda Loomis, Administrator

Summary

Jen Dullum, LMRWD Education & Outreach Coordinator, has put together a map of all the school District that students living in the LMRWD might attend. She also researched which schools are being served by other Watershed Districts or Water Management Organizations. We have discussed organizing a meeting of all the Education Coordinators from other WDs and WMOs to compare activities and determine if there are ways to coordinate and partner with each other.

The LMRWD had planned to table at Eden Prairie's Green Fair and Arbor Day Walk on April 30th. The event was cancelled due to weather. In preparing to table at that event, there is some gear that would be good for the LMRWD to purchase to use when tabling. A list follows of items Jen and I recommend the District purchase:

- A 6-foot table cover with the District logo on it
- Pop-up signage with a clean water message on it (vs. a pop-up sign with just the District name and logo - since that would be on the table cover)
- Swag (pencils, pens, pet waste bag dispenser, reusable straws...)
- Some sort of interactive display

We have discussed purchasing a 'root puller' jointly with Carver WMO and Riley/Purgatory/Bluff Creek Watershed District. If you have not seen this interactive display, it shows pictures of prairie plants, native grasses and more and then has a handle that can be pulled. It is pulled out the length of roots that the pictured plant has predominantly. It also has a handle for a typical lawn grass. The idea is to show how the native plants will hold soil and better prevent erosion.

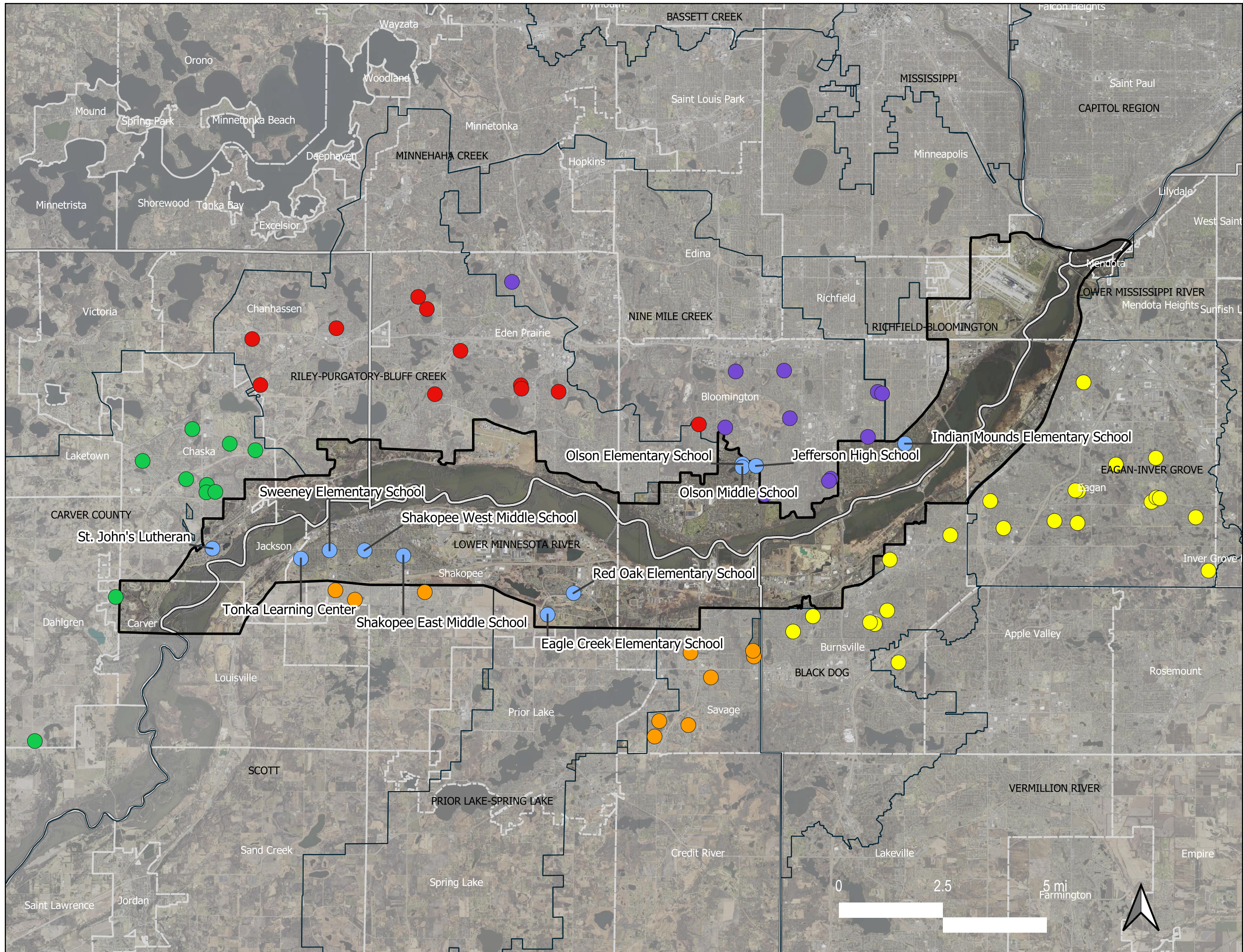
We have not priced any of these items, but custom table covers can be found for less than \$150 and portable retractable signage can be purchased for around \$200 depending on the size ordered. Staff recommends the Board authorize staff to spend up to \$500 for equipment to use when tabling.

Attachments

No attachments

Recommended Action

Motion to authorize LMRWD staff to spend up to \$500 on equipment to be used when tabling

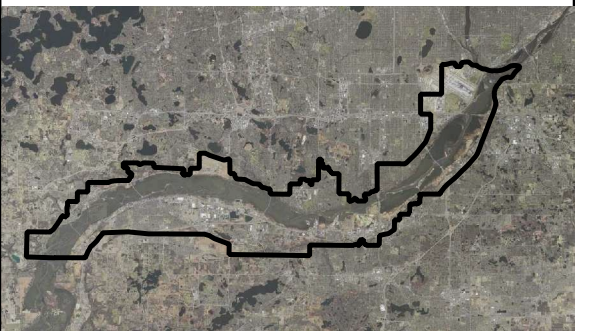


School Outreach Programming

LEGEND

- No Existing School Outreach Programming ●
- Carver County WMO ●
- Lower Minnesota River WD ●
- Nine Mile Creek WD ●
- Riley Purgatory Bluff Creek WD ●
- Scott County SWCD ●
- LMRWD Boundary
- Municipal Boundary
- County Boundary
- Watershed Management Organization Boundary

LMRWD Watershed Location Map



LOWER MINNESOTA RIVER
WATERSHED DISTRICT



Young Environmental Consulting
Group, LLC

