

Quarry Lake



Photo: Young Environmental

Minnesota Department of Natural Resources (MNDNR) site ID [70034300](#). *This link provides available information on lake location, morphometry, and fisheries.*

Quarry Lake, located in the city of Shakopee, Minnesota (the City) and formed in an opening left after a limestone quarrying operation that started in the 1960s, has closed. The mining operation encountered an underground spring that later filled the mining site. The spring continues to supply water to the lake. Quarry Lake is 50 feet deep and has a surface of approximately 70 acres. Its water is cool enough for a cold-water fishery. Quarry Lake is a designated trout lake that is managed and stocked by the Minnesota Department of Natural Resources (MNDNR) as a recreational fishery.

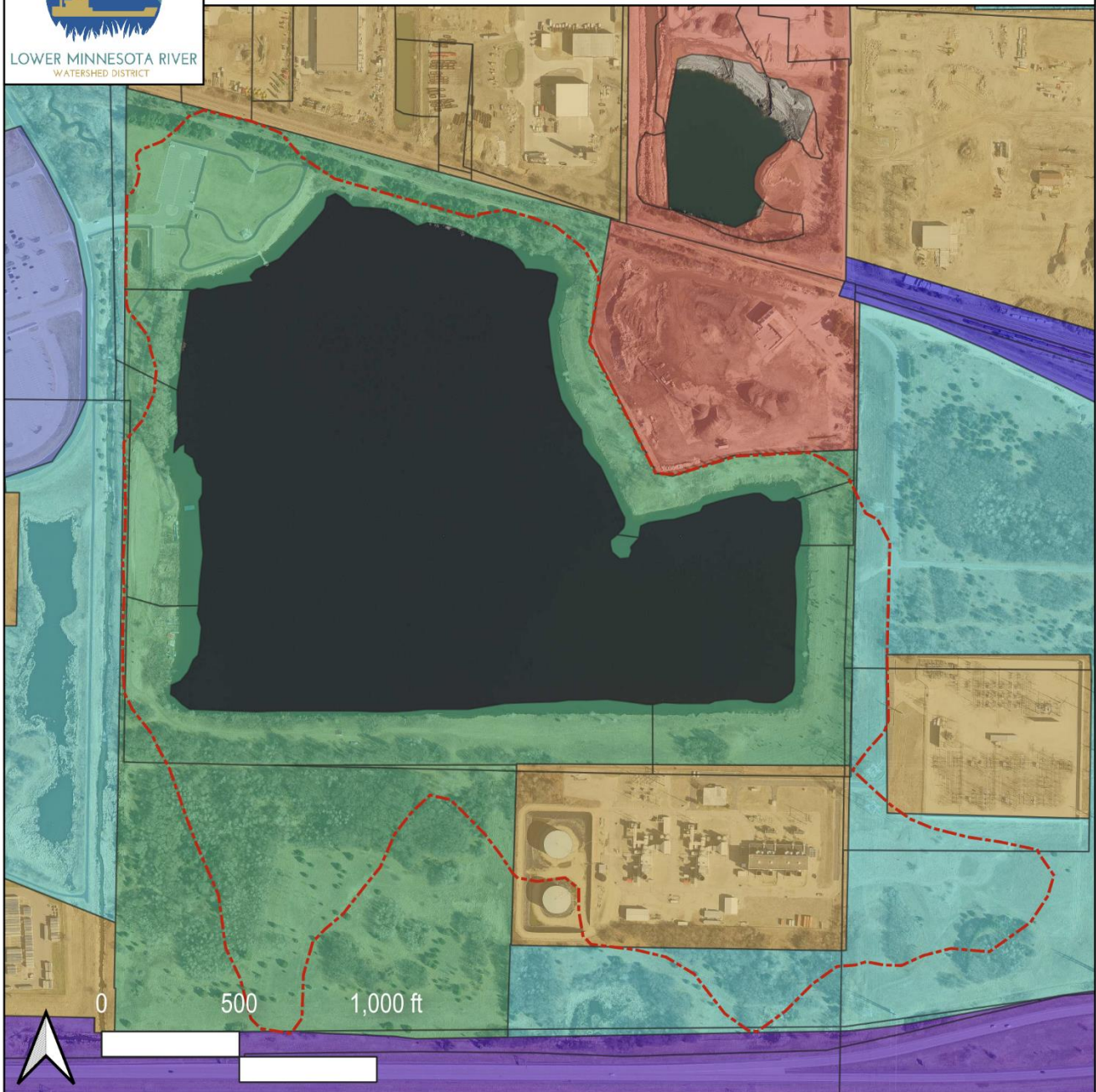
Although Quarry Lake is an MNDNR-designated trout lake, it is not a state-recognized public body of water. The MNDNR does not have regulatory jurisdiction over the lake and is not actively involved in its management. However, its trout designation allows the MNDNR Fisheries Department to conduct annual put-and-take operations. The put-and-take management method involves stocking a lake with fish to be caught by anglers. Generally, put-and-take management does not create a self-sustaining population of trout because few of the stocked fish reproduce. Since 2016, the MNDNR has annually stocked Quarry Lake with different species of trout, such as rainbow, brook, and brown trout.

The approximate contributing drainage area of Quarry Lake is similar in size to the lake area and consists mostly of parkland and the Blue Lake Peaking Plant, an auxiliary electrical power plant operated by Xcel Energy. The drainage area consists primarily of sandy soils. Aerial photography indicates that the shoreline has established vegetation. Despite the established vegetation, the City has reported that the lake is experiencing some shoreline erosion.



LOWER MINNESOTA RIVER
WATERSHED DISTRICT

Quarry Lake Land Use and Drainage Area



LEGEND

Quarry Lake Drainage Area

LMRWD_GeneralizedLandUseHistorical

Extractive

Industrial and Utility

Major Highway

Major Railway

Mixed Use Industrial

Office

Park, Recreational, or Preserve

Undeveloped

LMRWD Watershed
Location Map



Public access to Quarry Lake was first allowed in 2017 and is currently restricted to the northern part of the lake. Only foot traffic and nonmotorized watercraft are allowed in that area. A fishing pier is available to the public on the northwest corner of the lake. The Shakopee Prior Lake Water Ski Association has permission to use motorized watercraft on the lake between May 1 and October 31 for community shows and practices.

Water chemistry, lake bathymetry, and vegetation information for Quarry Lake has not been found. The MNDNR measured water temperature and dissolved oxygen (DO) levels during a water quality survey in 2016. DO levels were found to be suitable for a trout fishery. Eurasian watermilfoil, an invasive aquatic plant, was discovered in Quarry Lake for the first time in 2016.