



LOWER MINNESOTA RIVER WATERSHED DISTRICT

Executive Summary for Action

Lower Minnesota River Watershed District Board of Managers Meeting
Wednesday, September 15, 2021

Agenda Item

Item 6. E. Dredge Management

Prepared By

Linda Loomis, Administrator

Summary

- i. **Vernon Avenue Dredge Material Management site**
Main Channel dredging has been completed. The amount of material dredged from the navigation channel was estimated at 25, 438 cubic yards. Final amounts were 24,505 CY and can be found on the Corps' dredge schedule, which is attached.
- ii. **Private Dredge Material Placement**
Payment for 2020 placement of dredge material has been received from CHS, Inc. and Cargill. I have not yet received final amounts of material placed on the LMRWD site in 2021.

Attachments

Dredge Notice 21-22

Dredge Notice 21-23

09-09-2021 Dredging Schedule

Recommended Action

No action recommended



Dredge Notice 21-22 Petersons Bar

Published July 29, 2021

DN 21-22

DREDGING NOTICE

U.S. ARMY CORPS OF ENGINEERS

ST. PAUL DISTRICT

NOTICE DATE: July 29th, 2021

DREDGING CATEGORY: Imminent

MEETING DATE: If requested

MEETING TIME:

BOAT REQUIREMENT:

MEETING LOCATION:

DREDGE CUT NAME: Petersons Bar

RIVER MILE: MN River 12.2 – 12.6

HISTORIC DATA

Frequency: 61%

Avg. Quantity/Job: 18,725 yd³

Last Date Dredged: August 27th, 2020

Avg. Quantity/Year: 11,382 yd³

SURVEY DATA

Date Surveyed: July 27th, 2021

Water Surface Elevation: 687.1

Low Control Pool Elevation: 686.8

Net Difference: +0.3'

5 Day River Forecast: holding steady

DREDGING DATA

Recommended Channel Width: 100 feet

Recommended Dredging Depth: 12 feet

Estimated Quantity: 15,847 yd³ plus 612 yd³ placement site access

Type of Dredge: Contract Mechanical Plant 2

Proposed Dredging Date: August 3rd, 2021

Estimated Duration: 8 dredging days

Justification for Dredging: The navigation channel is reduced to 120' between the 9.0' contours and closed between the 10.5' contours.

MATERIAL PLACEMENT DATA

Proposed Placement Site: Cargill East River

Location: MN-14.1-RMP

Site Characteristics: This is an upland beneficial use stockpile site provided to the Corps by the Lower MN River Watershed District.

If you have any questions concerning this project or want to request an on-site meeting please call a dredging manager at (651) 290-5155.

Related Story: [DN 21-22 Petersons Bar](#) /Portals/57/docs/Navigation/Dredging Notices/2021/DN2122 Petersons Bar.pdf?ver=K88D8pAqNgUDJ5CBWxfgGA%3d%3d

Dredge Mississippi River navigation sedimentation St. Paul District

U.S. Army Corps of Engineers Petersons Bar

DN 21-23

DREDGING NOTICE
U.S. ARMY CORPS OF ENGINEERS
ST. PAUL DISTRICT

NOTICE DATE: August 13, 2021

MEETING DATE: If requested

BOAT REQUIREMENT:

DREDGE CUT NAME: Above Savage RR Bridge

DREDGING CATEGORY: Imminent

MEETING TIME:

MEETING LOCATION:

RIVER MILE: 14.4 - 14.7

HISTORIC DATA

Frequency: 37%

Date Last Dredged: September 18th, 2017

Avg. Quantity/Job: 13,767 yd³

Avg. Quantity/Year: 5,129 yd³

SURVEY DATA

Date Surveyed: August 10th, 2021

Water Surface Elevation: 686.9

Low Control Pool Elevation: 686.8

Net Difference: +0.1

5 Day River Forecast: Slow Decline

DREDGING DATA

Recommended Channel Width: 100 feet

Recommended Dredging Depth: 12 feet

Estimated Quantity: 8,979 yd³

Type of Dredge: Contract Mechanical

Proposed Dredging Date: August 13th, 2021

Estimated Duration: 5 dredging days

Justification for Dredging: The navigation channel is reduced to 8' between the 9.0' and 20' between 10.5' contours.

MATERIAL PLACEMENT DATA

Proposed Placement Site: Cargill East River

Location: MN-14.1-RMP

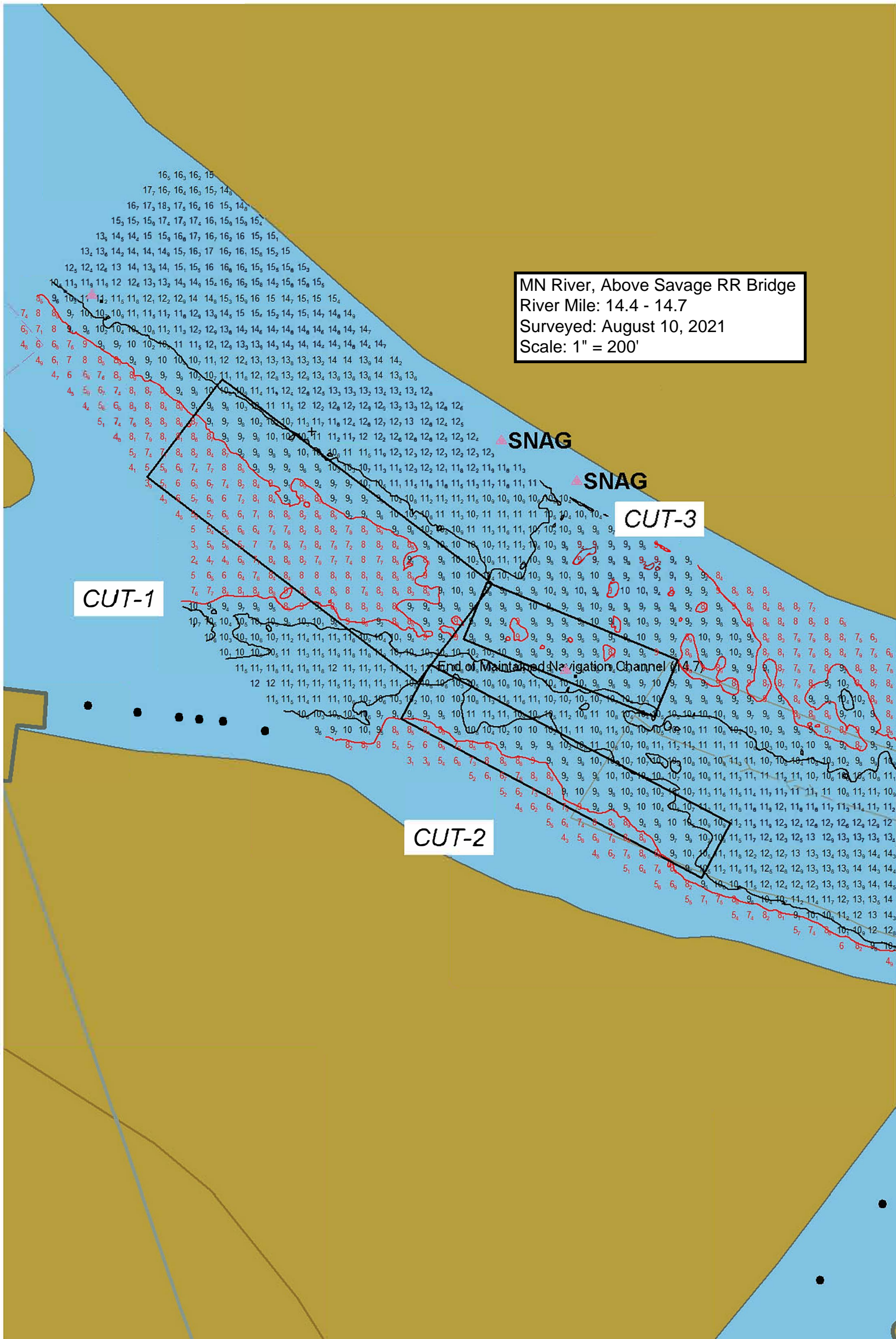
Site Characteristics: This is an upland beneficial use site provided to the Corps by the Lower Minnesota River Watershed District.

If you have any questions concerning this project, or if you would like to request an on-site meeting, please call me at (651) 290-5328.

Dan DeVaney

Channel Maintenance Coordinator

MN River, Above Savage RR Bridge
River Mile: 14.4 - 14.7
Surveyed: August 10, 2021
Scale: 1" = 200'



ST. PAUL DISTRICT (MVP) - CORPS OF ENGINEERS

2021 Dredging Schedule by Equipment

9-Sep-2021

Scheduled Dredging Jobs

Pool	Dredge Cut Name	River Mile	Dredging Dates	Depth (ft) & Est. Quantity	Equipment	Placement Site	Dredge Notice #	Task Order #	Cat.
4	** Crats Island	758.5 - 759.3	5/4 - 5/17	12 51,894	GZ	4-759.3-LWT	DN 21-04		I
4	** Teepeeota Point	757.2 - 758.0	5/18 - 5/28	12 76,305	GZ	4-757.5-LWT	DN 21-07		I
4	** Grand Encampment	755.7 - 756.8	6/1 - 6/18	11 15,491	GZ	4-757.5-LWT	DN 21-09		I
4	** " "	" "	" "	11 25,061	GZ	4-756.5-LWT	DN 21-09		I
5	** Fisher Island	744.6 - 745.3	6/19 - 6/27	12 62,904	GZ	4-744.7-LWT	DN 21-14		I
5	** Lower Zumbro	743.0 - 744.5	6/28 - 7/8	12 53,048	GZ	4-744.7-LWT	DN 21-18		I
8	** Above Brownsville	689.8 - 690.3	7/12 - 7/17	12 25,060	GZ	8-690.4-LWT	DN 21-20		R
	Departed for Rock Island Dist		7/18/2021						
4	** Grand Encampment	755.7 - 756.8	6/5 - 6/6	11 1,348	GM	4-754.0-LWP	DN 21-12		E
5A	** Betsy Slough	730.9 - 731.9	6/9 - 7/26	12 49,374	GM	5A-731.9-LWP	DN 21-13		I
3	** Diamond Bluff (2)	798.9 - 799.4	9/13 - 9/17	12 9,913	GM	3-801.0-RMP	DN 21-28		R
4	** Beef Slough	754.0 - 754.5	4/21 - 5/14	12 29,890	CM1	4-754.0-LWP	DN 21-03	0063	I
8	** Deadmans Slough	686.5 - 687.5	5/18 - 6/1	12 29,532	CM1	8-688.7-RMP	DN 21-06	0064	I
8	** Head of Raft Channel	687.5 - 688.2	6/2 - 6/23	12 27,691	CM1	8-688.7-RMP	DN 21-10	0067	I
9	** Indian Camp Light	665.0 - 665.8	6/24 - 7/26	12 48,466	CM1	9-663.5-LWP	DN 21-17	0068	I
9	** Lansing Upper Light	663.8 - 664.7	7/27 - 8/26	12 48,869	CM1	9-663.5-LWP	DN 21-21	0071	I
6	** Below Winona RR Bridge	723.3 - 723.7	8/31 - 9/9	12 13,382	CM1	6-726.0-LMP	DN 21-25	0075	I
6	** East End Boat Harbor Access	723.5	9/10/2021	7 392	CM1	6-722.9-RMP	DN 21-27	0077	R
6	** Below Winona RR Bridge (2)	722.6 - 723.3	9/10 - 9/23	12 20,134	CM1	6-722.9-RMP	DN 21-27	0077	I
2	** Pine Bend Plcmt Site Access	823.8	4/19/2021	7 299	CM2	2-823.8-LMT	DN 21-02	0062	R
2	** Pine Bend	822.6 - 823.8	4/19 - 5/14	12 37,054	CM2	2-823.8-LMT	DN 21-02	0062	I
2	** Boulanger Bend	820.4 - 821.4	5/14 - 6/1	12 20,945	CM2	2-823.8-LMT	DN 21-05	0065	I
3	** Corps Island Access	799.2	6/2/2021	7 98	CM2	3-799.2-RMT	DN 21-11	0066	R
3	** Coulters Island	801.5 - 802.0	6/3 - 6/23	12 27,657	CM2	3-799.2-RMT	DN 21-11	0066	I
3	** Morgans Coulee	802.0 - 803.0	6/24 - 7/9	12 23,008	CM2	3-799.2-RMT	DN 21-16	0069	I
3	** Diamond Bluff	799.7 - 800.7	7/12 - 7/30	12 26,411	CM2	3-799.2-RMT	DN 21-19	0070	I
MN	** Cargill E River Access	14.1	8/3/2021	7 753	CM2	MN-14.1-RMP	DN 21-22	0072	R
MN	** Petersons Bar	11.7 - 12.6	8/4 - 8/12	12 14,773	CM2	MN-14.1-RMP	DN 21-22	0072	I
MN	** Abv Savage RR Bridge	14.5 - 14.7	8/13 - 8/18	12 8,979	CM2	MN-14.1-RMP	DN 21-23	0073	I
4	** Red Wing Comm Har Access	791.6	8/23/2021	7 1,361	CM2	4-791.6-RMP	DN 21-24	0074	R
4	** Cannon River	792.8 - 793.4	8/23 - 9/2	12 11,677	CM2	4-791.6-RMP	DN 21-24	0074	I
4	* Head of Lake Pepin	784.4 - 784.9	9/7 - 9/27	11 26,168	CM2	4-791.6-RMP	DN 21-26	0076	I
7	** Trempealeau Plcmt Site Access	714.1	6/21/2021	7 45	CM3	7-714.1-LWP	DN 21-15	0002	R
7	** Winters Landing	707.5 - 708.0	6/21 - 7/19	12 15,186	CM3	7-714.1-LWP	DN 21-15	0002	I
10	** McMillan Island	617.7 - 618.3	4/12 - 5/19	12 70,016	CM4	10-634.5-LWP	DN 21-01		R
10	** East Channel	635.5 - 636.4	5/20 - 7/2	12 70,000	CM4	10-634.5-LWP	DN 21-08		I
10	** Hovie Island	622.0 - 622.4	8/9 - 8/12	12 4,000	CM4	10-634.5-LWP	NA		R
10	** Hovie Island	621.6 - 622.0	8/30 - 9/3	12 15,000	CM4	10-634.5-LWP	NA		R
9	* "Unnamed Borrow Source"	653.3 - 654.5	8/16 - 10/15	20 20,000	CM5		NA		R

* Currently Dredging
** Dredging Complete

Cat. Codes: E = Emergency
I = Imminent Closure
R = Routine Dredging

	Equipment:	Scheduled:	Unscheduled:	Total:
	Government Hydraulic - GOETZ - (GZ)=	309,763	131,076	440,839
	Government Mechanical - HAUSER/WADE - (GM)=	50,722		50,722
	Contract Mechanical - (CM1)=	218,356	595,326	1,012,865
	Contract Mechanical - (CM2)=	199,183		
	Contract Mechanical - Unload IDIQ - (CM3)=	15,231		15,231
	McGregor HREP Contract Mechanical - (CM4)=	159,016		159,016
	Harper Slough HREP Contract Mechanical - (CM5)=	20,000		20,000

Total Dredging Quantities = **972,271** **726,402** **1,698,673**

Potential Unscheduled Dredging Jobs

Pool	Dredge Cut Name	River Mile	Depth & Est.	Equipment	Placement Site		Cat.
MN	Cargill Slip	12.6 - 12.8	12 5,054				
MN	Mouth of the MN River	0.6 - 1.0	12 14,465				
2	St Paul Barge Terminal	837.2 - 837.6	12 22,989				
2	Pine Bend Landing	824.0 - 824.5	12 19,599				
2	Boulanger Bend Lower Light	819.9 - 820.3	12 18,852				
2	Freeborn Light	818.2 - 819.0	12 18,318				
3	Lower Aprr to LD 2	814.5 - 815.1	13 20,241				
3	Prescott	810.1 - 810.5	12 29,369				
3	Four Mile Island	807.3 - 807.6	12 5,788				
3	Big River	804.8 - 805.4	12 8,690				
4	Red Wing Hwy Bridge	789.6 - 790.0	12 21,717				
4	Head of Lake Pepin	784.5 - 785.5	12 71,568				
4	Reads Landing	762.4 - 762.7	12 7,412				
4	Grand Encampment	755.7 - 756.8	12				
5	Mule Bend	747.7 - 749.0	12 70,111				
5	West Newton	747.4 - 747.7	12 14,659				
5	Below West Newton	746.3 - 746.5	12 9,125				
5	Abv Mt Vernon Light	741.1 - 741.4	12 11,067				
5A	Wilds Bend	730.3 - 730.7	12 14,935				
6	Homer	719.8 - 720.8	12 32,650				
6	Blacksmith Slough	719.0 - 719.5	12 20,346				
7	Head of Richmond Island	712.2 - 712.9	12 36,007				
7	Dakota	706.0 - 706.4	12 31,448				
8	Sand Slough	694.3 - 694.6	12 15,238				
8	Root River	692.8 - 693.2	12 15,283				
8	Picayune Island	690.5 - 691.7	12 99,838				
8	Brownsville	688.7 - 689.0	12 23,826				
9	Island 126	677.5 - 678.0	12 41,192				
10	McMillan Island	617.9 - 619.0	12 26,615				

Total quantity for jobs that have not been scheduled = 726,402