

## 12.0 CITY OF MENDOTA

The City of Mendota is located south of the Minnesota River in Dakota County, sandwiched between Lilydale and Mendota Heights. The 2008 Inventory identified four gullies within the City of Mendota ([Figure 116](#)).

### 12.1 Previous Restoration Efforts

None known.

### 12.2 Field Survey Discussion

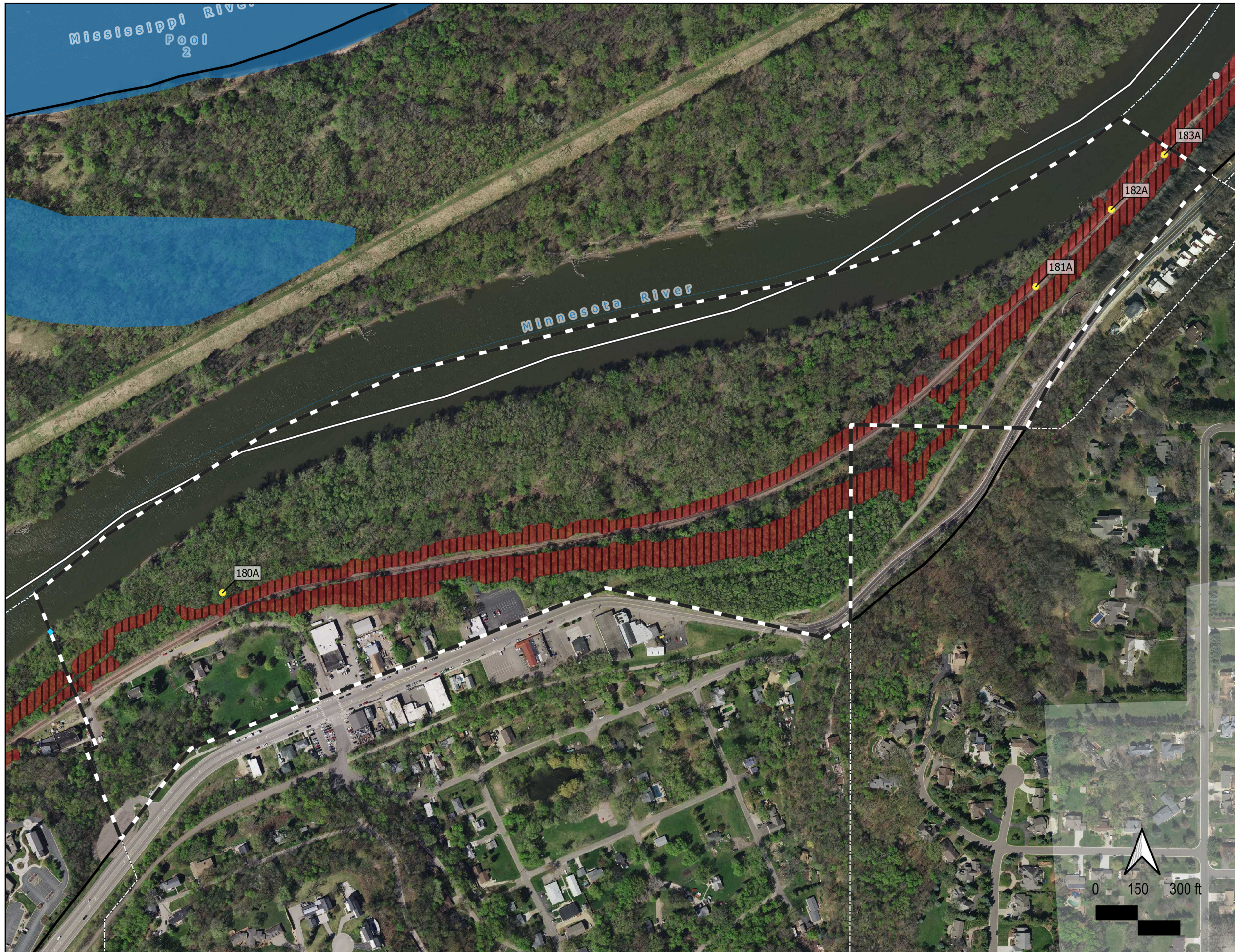
The portions of Mendota within the LMRWD appeared to have the same type of terrain as Mendota Heights and Lilydale, but due to its small size, only five pipe outfalls and one gully were found within the city ([Figure 117](#)). One pipe could not be located, possibly as the result of heavy vegetation, but no other access difficulties arose in Mendota. No interactions with private property owners occurred.

With the exception of one new pipe along Highway 13, all pipe outfalls in Mendota were found along the railroad tracks ([Figure 118](#)). L347 is a pipe outfall consisting of a chute delivering water down from a pipe onto the limestone bluffs above the railroad and through another pipe beneath the railroad, where it then discharges into the Minnesota River.

One gully (999-073) in Mendota was found to be a new feature ([Figure 119](#)). The gully fed right into the Minnesota River and showed signs of active erosion along the banks and head cut. Due to its depth and length, it was rated as having moderate erosion potential.

### 12.3 City of Mendota High-Priority Sites

Of the sites surveyed, only one gully (999-073) was surveyed, and it was in moderate condition with one pipe outfall requiring repair (999-076).

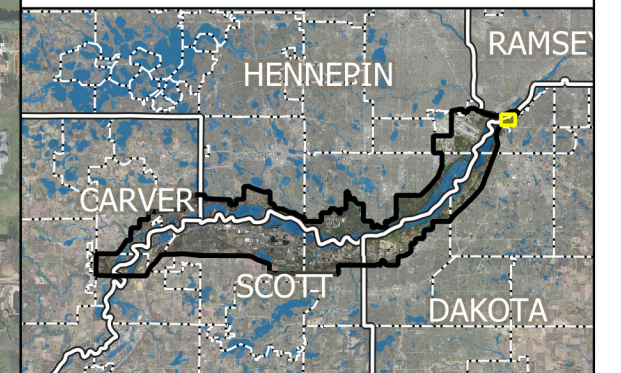


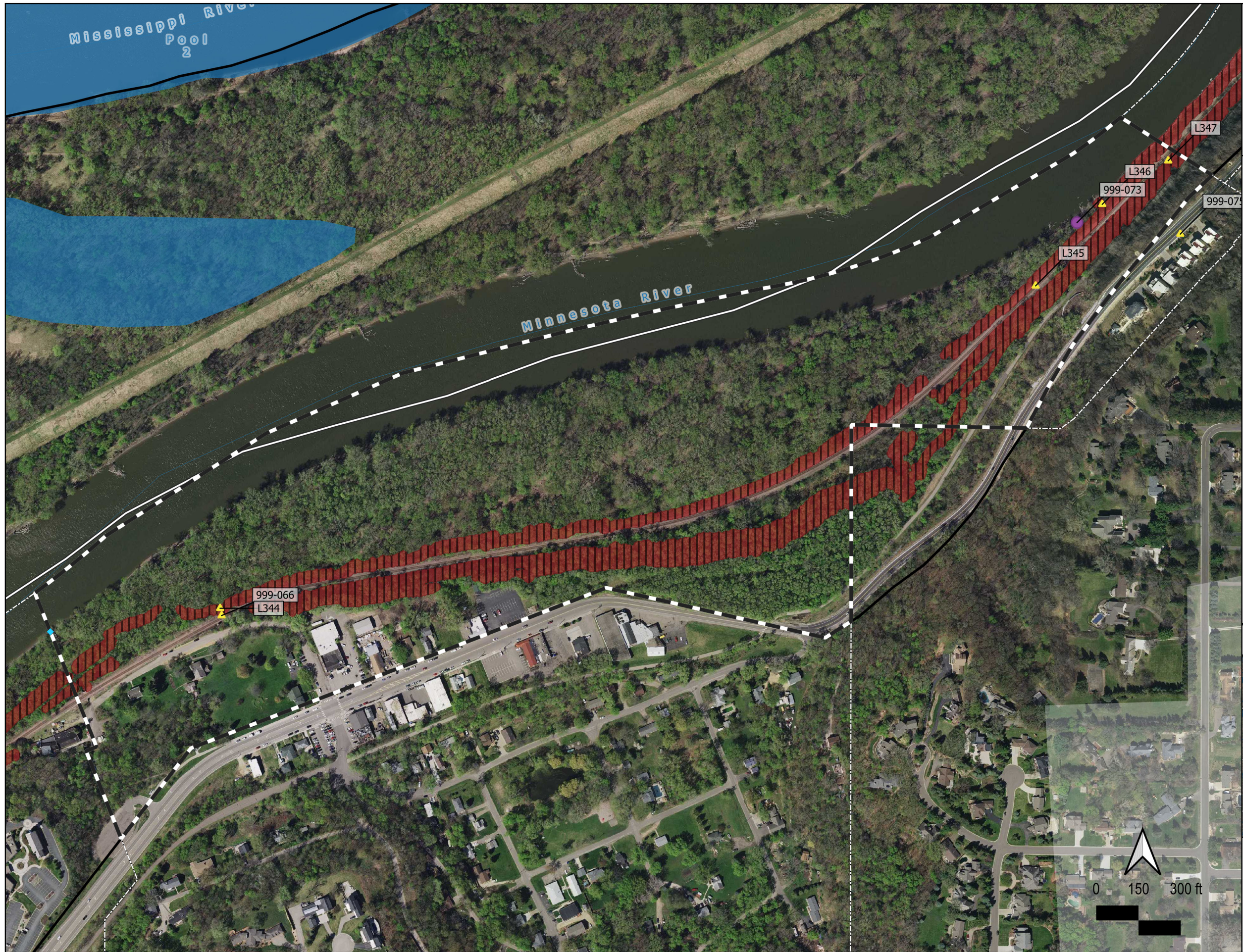
**Figure 116:  
Mendota 2008  
Inventory Locations**

**LEGEND**

- 2008 Gully Inventory Waypoints
  - Inside LMRWD
  - Outside LMRWD Boundary
  - ✘ Non-Applicable Points
  - Outside Mendota
  - ◆ MnDNR Spring Inventory
  - ◇ Calcareous Fens
- Public Waters
  - Public Waterbodies
- LMRWD Overlay Districts
  - ▨ High Value Resource Area Overlay District
  - ▨ Steep Slopes Overlay District [SSOD]
- Political Boundaries
  - ▭ Mendota
  - ▭ LMRWD Boundary
  - ▭ Cities, Townships, Unincorporated Areas
  - ▭ County Boundaries

**LMRWD Watershed Location Map**



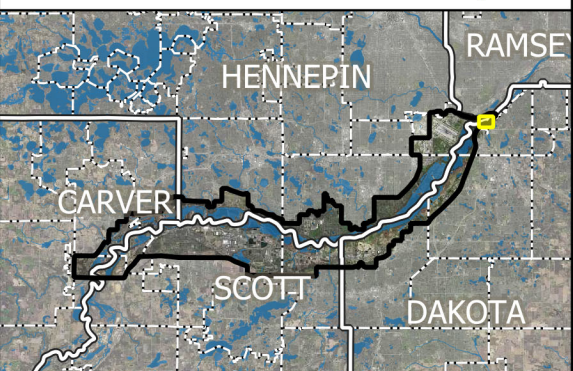


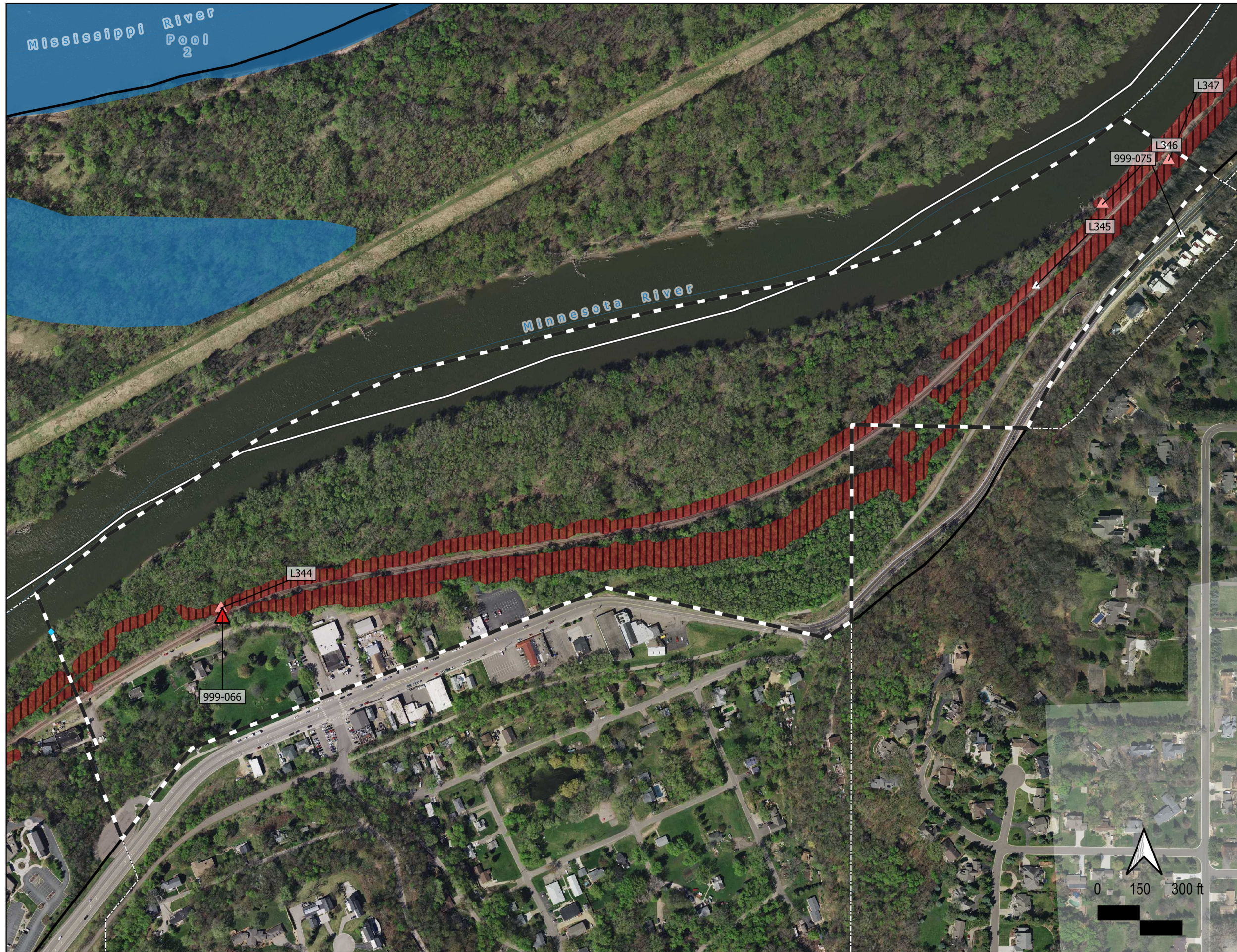
**Figure 117:  
Mendota 2020 Survey  
Locations**

**LEGEND**

- ▲ 2020 Pipe Outfall Surveys
- ◆ 2020 Combination Surveys
- 2020 Gully Surveys
- ⊗ 2020 Inaccessible Waypoints
- ⊗ 2020 Non-Applicable Waypoints
- ◆ MnDNR Spring Inventory
- ◆ Calcareous Fens
- Public Waters
- Public Waterbodies
- LMRWD Overlay Districts
- High Value Resource Area Overlay District
- Steep Slopes Overlay District [SSOD]
- Political Boundaries
- Mendota
- LMRWD Boundary
- Cities, Townships, Unincorporated Areas
- County Boundaries

**LMRWD Watershed Location Map**



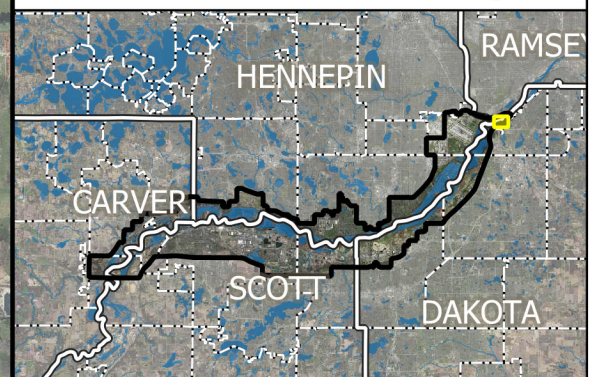


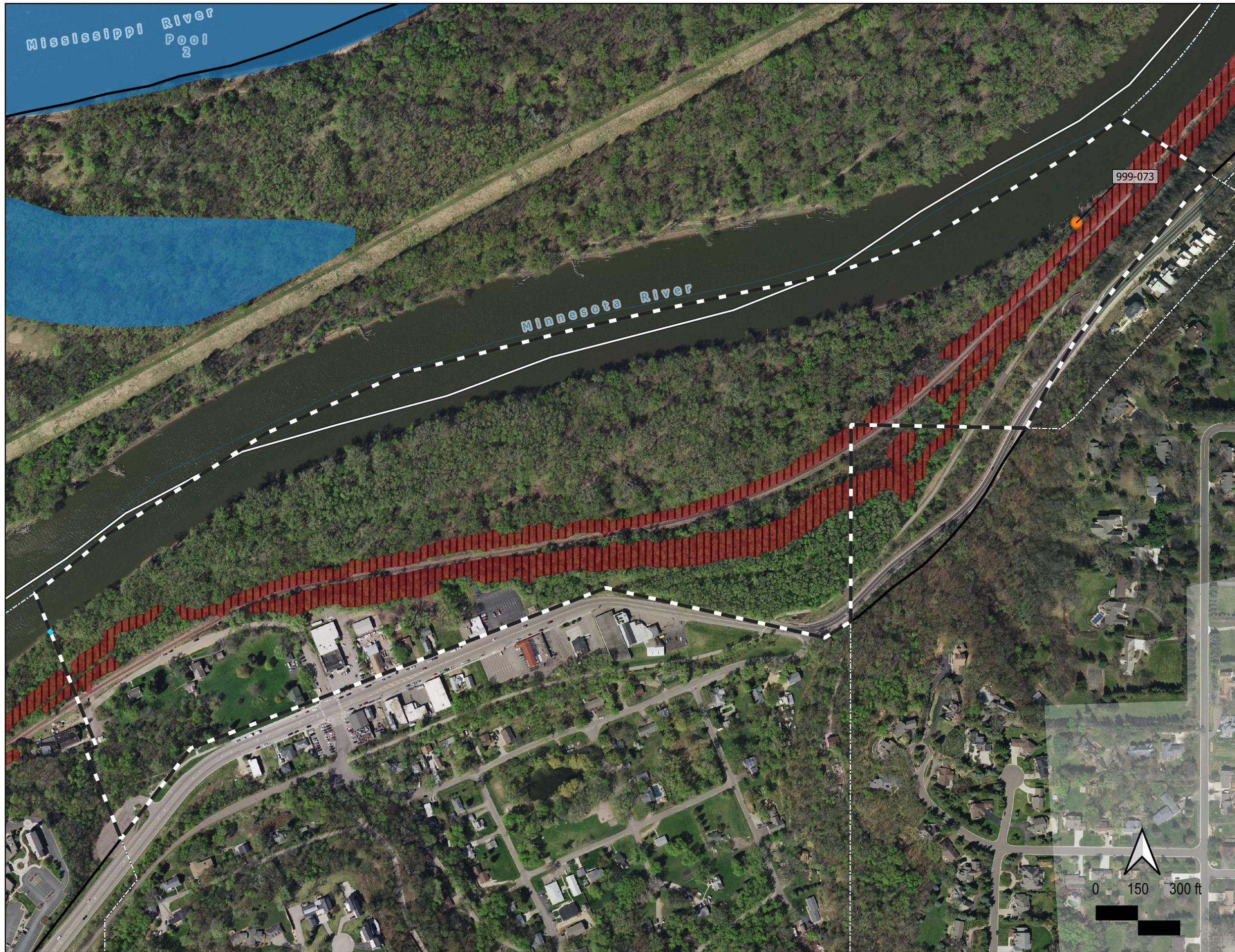
**Figure 118:  
Mendota 2020 Pipe  
Outfall Conditions**

**LEGEND**

- 2020 Pipe Outfalls
- ▲ Needs Immediate Attention
  - ▲ Potential/Future Repair Needed
  - ▲ Good Condition/No Repair Needed
  - ◆ MnDNR Spring Inventory
  - ◆ Calcareous Fens
  - Public Waters
  - Public Waterbodies
- LMRWD Overlay Districts
- High Value Resource Area Overlay District
  - Steep Slopes Overlay District [SSOD]
- Political Boundaries
- Mendota
  - LMRWD Boundary
  - Cities, Townships, Unincorporated Areas
  - County Boundaries

**LMRWD Watershed Location Map**





**Figure 119:  
Mendota 2020 Gully  
Conditions**

**LEGEND**

- 2020 Gully Condition
- ◆ High Erosion Potential
  - Moderate Erosion Potential
  - Good Condition/No Repair Needed
  - ◆ MnDNR Spring Inventory
  - ◆ Calcareous Fens
  - Public Waters
  - Public Waterbodies
- LMRWD Overlay Districts
- High Value Resource Area Overlay District
  - Steep Slopes Overlay District [SSOD]
- Political Boundaries
- ▭ Mendota
  - ▭ LMRWD Boundary
  - ▭ Cities, Townships, Unincorporated Areas
  - ▭ County Boundaries

**LMRWD Watershed Location Map**

