



## LOWER MINNESOTA RIVER WATERSHED DISTRICT

---

August 2020 Administrator report  
From: Linda Loomis, Administrator  
To: LMRWD Board of Managers

In addition to items on the meeting agenda, work continues on the following District projects and issues:

### **Other Work**

---

#### **Dakota County Manager**

I contacted Mark Zabel of Dakota County about reaching out to Dakota County residents to look for someone interested in an appointment to the LMRWD Board of Managers. I asked if we could get a list of resident and he said we would have to check to see if he could give us a list. He did say that the County previously sent a postcard to all residents after Manager Shirk resigned.

I reached out to the Master Water Steward program as suggested by Manager Salvato for a list of those living in Dakota County that have completed the program. All the addresses of the Dakota County Master Water Stewards live in the Eagan/Inver Grove Heights WMO.

#### **Watershed Based Funding**

The Minnesota River North group will hold its 3rd meeting July 14, 2020. The group is working on setting priorities for project funding in order to determine how funds will be allocated. Lower MN River North has been allocated \$673,699 for FY 2020/2021. They met again on August 17, 2020 and agreed to work on priorities for determining which projects to fund. The LMRWD added Bank Stabilization for Study Area #3 to the list of projects.

The Minnesota River South group held its 4th meeting July 23, 2020. Its 5th meeting is scheduled for September 18, 2020. There was discussion about allocating percentages of funding into "buckets", such as 70-80% for projects, 5-20% for education and 10-20% for studies. Lower MN River South has been allocated \$829,075 for FY 2020/2021. Meeting notes are available (for Lower Minnesota River South) if Managers wish to see them

#### **One Watershed One Plan - Planning Area 56**

Le Sueur County organized a meeting for this group on Wednesday July 15, 2020. The focus of the meeting discussed who wanted to be a part of the group and what was entailed by becoming involved. There were many Metro Watershed Management Organizations that were interested in being on a technical advisory group, but didn't want to be part of the planning group. A summary of the meeting is attached.

#### **Trout Stream Restoration**

On May 22nd, Della Young and I chatted with Representatives from Trout Unlimited. Trout Unlimited proposed a project to restore a trout stream in Dakota County. Since then Della and I had an opportunity to visit with Mark Nemeth of DNR Fisheries. Mark is very familiar with the trout streams within the boundaries of the LMRWD. He was not sure the value of restoration of the trout stream identified by Trout Unlimited, however, we did speak in general about the trout streams and agreed to meet with Mark again and other DNR Fisheries staff to talk about LMRWD trout streams; similar to the I:\Administrator reports\2020 Administrator Reports\August 2020 Administrator Report.docx

work the LMRWD did with the DNR on the calcareous fens. We plan to meet virtually, July 28th at 1:00pm. Future information will be reported under the Geomorphic Assessment Project.

In addition, Della has been looking into a technology that can give the District a better picture of the groundwater. This would give the District more information about the impact of ground water withdrawals on trout streams and fens.

### **Technical Assistance for Residents in Hennepin County**

The LMRWD has agreements to provide technical services to residents in Carver, Dakota and Scott Counties. The Soil & Water Conservation Districts are able to provide this service and bill the LMRWD based on time and expenses. Hennepin County does not have a Soil & Water Conservation District. When residents of the LMRWD that live in Hennepin County call the District looking for advice, the District has no one to refer them to. I have had discussions with Hennepin County's Department of Natural Resources and we are looking at entering into an agreement with the County to provide services to Hennepin County residents that live in the LMRWD. Lately, I have had two residents of Bloomington call to ask for resources. Both live on the bluffs of the Minnesota River and are looking for information about removing invasive species and managing the steep slopes. The agreement will come to the Board for approval once it is ready.

### **Watershed Plan Projects**

---

**Gully Inventory and condition assessment:** The interns will make a presentation of their findings to the Board at the August meeting.

Project website: <http://lowermnriverwd.org/projects/mn-river-corridor-management-project>

**Eden Prairie Area #3 Stabilization:** An update on this item is on the August agenda.

Project website: <http://lowermnriverwd.org/projects/mn-river-corridor-management-project>

**Riley Creek Cooperative project/Lower Riley Creek restoration:** No new information since last update.

Project website: <http://www.rpbcwd.org/whats-happening/projects/lower-riley-creek-ecological-restoration>

**Seminary Fen ravine stabilization project:** There is no new information to report since the last update.

Project website: <http://lowermnriverwd.org/projects/bwsr-clean-water-fund-grant-administration>

**East Chaska Creek: (Carver County Watershed Based Funding):** Staff met on site with the contractor and the City. Entry points to the project were discussed. We also discussed public notification. A schedule was agreed upon; the contractor, Blackstone will begin in late October, early November when the water level in the creek is expected to be the lowest. The City needs to give the District permission to enter City property to complete the project, so far we have not heard any more from the City.

Project website: <http://lowermnriverwd.org/projects/east-chaska-creek-bank-stabilization>

**Schroeder Acres Park (Scott County Watershed Based Funding):** No new information since last update.

Project website: <http://lowermnriverwd.org/projects/schroeder-acres-parkeagle-creek-sub-watershed-stormwater-study>

**Shakopee Downtown BMP Retrofit (Scott County Watershed Based Funding):** The City of Shakopee has retained Barr Engineering to conduct this study.

Project website: <http://lowermnriverwd.org/projects/targeted-bmps-downtown-shakopee>

**PLOC (Prior Lake Outlet Channel) Restoration (Scott County Watershed Based Funding):** No new information since last update.

Project website: <http://lowermnriverwd.org/projects/prior-lake-outlet-channel-realignmentwetland-restoration>

**Dakota County Fen Gap Analysis and Conceptual Model (Dakota County Watershed Based Funding):**

There is a work plan in the August meeting agenda to continue work on Dakota County fens and other within the LMRWD.

Project website: <http://lowermnriverwd.org/projects/dakota-county-fen-study-management-plan>

**Hennepin County Chloride Project (Hennepin County Watershed Based Funding):** No new information since last update.

**Vegetation Management Plan:** No new information since last update.

**Sustainable Lake Management Plan: Trout Lakes:** No new information to report since last update.

**Geomorphic Assessment of Trout Streams:** Work on the gap analysis is continuing on this project.

**Spring Creek Cost Share:** Barr Engineering has been asked to complete an assessment of the hydrology of the Spring Creek Watershed, including potential future development as proposed in the [September 6, 2019 Spring Creek assessment Summary](#).

**West Chaska Creek Re-meander:** No new information to report since last update.

**Seminary Fen Ravine Restoration Area C2:** No new information to report since last update.

## Project Reviews

---

**Shakopee Mdewakanton Sioux Community:** - The LMRWD was notified that the SMSC intends to amend its well head protection plan.

**Greystone Development/ Canterbury Park:** - The LMRWD received a permit application for a project that is part of a regional development plan surrounding Canterbury Park. Staff held discussion with the City and the proponent for the project on August 11, 2020

**Veterans Memorial Bridge:** City of Shakopee - The City is planning to replace a bridge that was damaged by flooding in 2014. LMRWD is reviewing the project and has until August 28, 2020 to submit comments to the DNR on the project.

**Quarry Lake Park Improvements:** City of Shakopee - The City of Shakopee is planning to make improvements to Quarry Lake Park. Improvements consist of providing an outlet from the Lake to manage water elevation, improved trail connections, upgrades to the playground and improvements to lake access for the local water ski club. In the course of LMRWD staff discussions with the City it was also mentioned that the City has plans for a mountain bike course. The City will be submitting information this month so that a permit for the work can be issued.

**Prairie Heights:** City of Eden Prairie - This item is on the August 2020 Agenda

**Carver County CSAH 10:** City of Chaska - The LMRWD sent its comments on this project to the County, but has not received any response.

Project website: <https://www.co.carver.mn.us/departments/public-works/projects-studies/highway-10-study-victoria-chaska-area>

**Water Treatment Expansion Project:** City of Carver - Engineers for this project have been in contact with the District and have been asked to submit a permit application.

**Vierling Industrial:** City of Shakopee - This permit was approved by the Board at the July 2020 meeting.

**Keyland Development:** City of Shakopee - The LMRWD received a Notice of Decision on the Wetland delineation for this project

**Hentges Industrial park:** City Shakopee - The LMRWD received a Notice of Decision on the Wetland delineation for this project.

**9960 Deerbrook, Chanhassen:** No new information to report since last update.

**Beech Street Bridge replacement:** Chaska - No new information to report since last update.

**Summerland Place Residential Development EAW:** Shakopee - No new information since last update.

**Timber Creek Residential Development EAW:** Carver - No new information to report since last update.

**MNDOT TH13 Improvement Study:** The LMRWD has not received any updates on this project.

Project website: <http://www.dot.state.mn.us/metro/projects/hwy13savageburnsville/index.html>

**Historic Fort Snelling Revitalization:** The LMRWD received notification on July 2nd that construction on this project is expected to begin.

Project website: <https://www.dnr.state.mn.us/input/environmentalreview/upperpost/index.html>

**HCRRA MN River Bluffs Regional Trail:** Construction on this project began. The LMRWD received notification that some changes to the plan were proposed after construction began.

**MNDOT ADA Trail improvements in Mendota:** No new information since last update.

**MNDOT trail drainage improvements in Lilydale:** No new information since last update.

**MNDOT Trail - 494:** No new information to report since last update.

**MNDOT - TH5:** Work continues on this project.

Project website: <http://www.dot.state.mn.us/metro/projects/hwy5mpls-stpaul/index.html>.

**City of Chanhassen - Moon Valley Gravel Pit:** No new information to report since last update.

**City of Carver - Hawthorne Ridge:** The LMRWD is waiting for a response from the City to our comments.

**City of Burnsville - Quarry Property, LLC** - No new information on this project since last update.

**City of Carver - Levee rehabilitation:** No new information to report since last update.

**City of Carver - Jonathan Parkway upgrades** - Comments have been provided to WSB, the consulting Engineers for this project. The LMRWD is recommending deferring authority for Rules B - Erosion and Sediment Control and D - Stormwater Management, but that the LMRWD retain permitting authority for Rule F - Steep Slopes. The LMRWD Comments are attached for your review.

Project website: <https://www.co.carver.mn.us/departments/public-works/projects-studies/jonathan-carver-parkway-highway-11-improvements>

**City of Burnsville - CenterPoint Energy Training Facility** - No new information on this project since last update.

**City of Burnsville -5337 Properties, LLC:** No new information on this project since last update.

**City of Burnsville - Freedom Enterprises, LLC:** No new information on this project since last update.

**City of Burnsville - Industrial Equities - 250 River Ridge Circle North:** - No new information on this project since last update.

**City of Burnsville - United Properties - 12400 Dupont Avenue North:** No new information on this project since last update.

**City of Burnsville - Kraemer Mining:** No new information to report since last update.

**Dakota County - MN River Greenway:** A field inspection to review wetland boundaries with respect to the pedestrian bridge is scheduled for Thursday August 27, 2020 from 12:00 noon to 2:00 pm. Project website: <https://www.co.dakota.mn.us/parks/About/TrailPlanning/Pages/minnesota-river.aspx>

**City of Shakopee - Jackson Township AUAR:** No new information to report since last update.

**City of Burnsville - CenterPoint Energy Lyndale Valve Replacement Project:** No new information to report since last update.

**City of Eden Prairie - C. H. Robinson:** No new information to report since last update.

**City of Burnsville - Freeway Dump and Landfill:** This item is on the August 2020 agenda to provide direction to staff.

Project website: <https://www.pca.state.mn.us/waste/freeway-landfill-and-dump>

*Note: This project was previously reported as the Burnsville Sanitary Landfill. There are two landfill projects going on in Burnsville. The one reported on this month is a cleanup of a super fund site - Freeway Dump and Landfill. The second landfill project is a request from the Burnsville Sanitary Landfill (owned by Water Management) to expand the amount of waste that it can bring to the site.*

**City of Eden Prairie - Peterson Wetland Bank:** No new information to report since last update.

**City of Chanhassen - TH 101 Improvements:** The last two inspection reports are attached.

Project website: <https://www.highway101improvements.com/>

**Cities of Richfield/Bloomington - TH 77 & 77th Street underpass:** No new information to report since last update.

**City of Bloomington - MN Valley State Trail:** No new information to report since last update.

Project website: [https://www.dnr.state.mn.us/state\\_trails/minnesota\\_valley/plans.html](https://www.dnr.state.mn.us/state_trails/minnesota_valley/plans.html)

**Hennepin County - CSAH 61/Flying Cloud Drive:** Ames Construction has reportedly completed its work. However, the LMRWD has noticed that several construction erosion control measures are still in place. LMRWD staff is working to find the party responsible for removing the measures.

**MNDOT - I494/TH 5/TH 55 Mill & Overlay project:** No new information to report since last update.

Project website: <https://www.dot.state.mn.us/metro/projects/i494invergroveheights/>

**MNDOT - I35W Bridge Replacement:** No new information to report since last update.

Project website: <https://www.dot.state.mn.us/metro/projects/i35wbloomington/index.html>

**MNDOT - I494 from TH169 to Minnesota River:** No new information to report since last update.

**Scott County - TH 41/169/78 Interchange:** No new information to report since last update.

Project website <https://www.scottcountymn.gov/1778/Highways-1694178-Interchange?PREVIEW=YES&PREVIEW=YES&PREVIEW=YES&PREVIEW=YES>

**City of Shakopee - Amazon Fulfillment Center drainage:** No new information to report since last update.

**MAC/LMRWD/MCWD boundary realignment:** No new information to report since last update.

**Fort Snelling - Dominion Housing:** This item is on the August 2020 agenda for approval of the permit.

The DNR's website for this project is

<http://www.dnr.state.mn.us/input/environmentalreview/upperpost/index.html>.

**USACOE/USFWS - Bass Ponds, Marsh & Wetland:** Construction is scheduled to begin on this project in August 2020.

Project website: <https://www.scottcountymn.gov/1865/Bass-Ponds-EAW>

---

## Upcoming meetings/events

- UMWA - Thursday, August 20, 12:30pm to 1:30pm, contact District Administrator to join

- [Agricultural Drainage & the Future of Water Quality, Part 2](#) - Thursday, August 20, 8:00am to 12:00 noon, virtual conference
- USACE River Resource Forum #117 - August 25, 8:00am to 4:00pm, virtual meeting, contact District Administrator for instructions to participate.
- [Metro MAWD](#) - Tuesday, October 20, 7:00pm to 9:00pm
- [Water Resource Conference](#) - October 20-21, virtual conference, registration can be accessed through link provided.
- USACE River Resource Forum #118 - December 1-2, MN Valley US Fish & Wildlife Service Visitor's Center, Bloomington, MN

# Lower Minnesota River One Watershed One Plan

## Meeting Notes July 15<sup>th</sup> 2020

**Attendees at meeting:** Holly Kalbus (Le Sueur County), Mike Schultz (Le Sueur SWCD), Brad Behrens (Rice County), Steve Pahs (Rice SWCD), Vanessa Strong (Scott County & Scott WMO), Troy Kuphal (Scott SWCD), Meghan Darley (Scott SWCD), Diane Lynch (Prior Lake-Spring Lake WD), Linda Loomis (Lower Minnesota River WD), Scott Walz (Shakopee Mdewakanton Sioux Community), Mike Wanous (Carver SWCD), Joe Barten (Lower Mississippi River WMO), Daryl Jacobson (Black Dog WMO), Jack Distel (Richfield-Bloomington WMO), Ashley Gallagher (Dakota SWCD & Eagan-Inver Grove Heights WMO), Brain Watson (Dakota SWCD), Valerie Grover (Dakota County) Jenny Mocol-Johnson (BWSR), Barb Peichel (BWSR)

### Agenda/Ice Breaker Question

- The Lower Minnesota River One Watershed One Plan (1W1P) meeting started at 1pm on July 15<sup>th</sup> 2020. The meeting was virtual, via Webex. Le Sueur County briefly went over the agenda. The main goal of the meeting was to start to formalize the level of participation each LGU/entity would like to be involved in with One Watershed One Plan. If time allowed, discussion of boundaries would take place.
- The first item on the agenda was an ice breaker question: What is your favorite water resource within the Lower Minnesota River Watershed? The intent of the ice breaker question is for everyone get to know each other better and slowly work our way into the items that would be discussed for the meeting. Everyone had participated; many individuals picked a water resource either based of aesthesis and/or the recreational activities that water resource provided.

### Recap/Brief Summary of Last Meeting

- A brief summary was provided to the group of what occurred at the last meeting. This may have been helpful to some individuals who were not in attendance at the last meeting (Feb 28<sup>th</sup>) or for those who may need a refresher on what was discussed (a few month time lapse between meetings; served as a reminder).
- The summary discussed how introductions started off the meeting. Many of the individuals have not worked with each other or have briefly worked with each other; therefore, introductions were important. It was also mentioned that BWSR explained the One Watershed One Plan process since some LGUs may not be very familiar with the process. Some LGUs had discussed their experience with One Watershed One Plan. At the last meeting, there was discussion about participation with One Watershed One Plan, but many of the LGUs needed time to talk with their staff and boards to determine

level of interest and staff capacity. The last item that was discussed at the February 28<sup>th</sup> meeting was boundaries. The boundaries that were presented to the group were just options (no final decision was made). The boundaries were there for talking points and a way to get the conversation going as far as potential changes, but it really depends on which LGUs would like to participate with planning efforts. Also, it was noted, that there was some discussion amongst the group that there would be interest in serving as a Technical Advisory Group (TAG) rather than with planning efforts.

### **LGU Update on Participation in Planning Effort**

- The main goal of this meeting was for each LGU to have the opportunity to discuss the conversations they had with their staff and board members about participating in One Watershed One Plan. In order for this watershed to move forward, we first would like to determine who would like to participate. Note that participation can occur on many different levels. Many of the individuals did not take board action for deciding on participation (it was more conversations than anything, but provides a good recommendation on which direction each LGU would like to pursue).
- Troy Kuphal, Scott SWCD, stated that he went to the Scott SWCD Board with a summary of what was discussed at the February 28<sup>th</sup> meeting. The board was fully supportive of being involved with the planning efforts of One Watershed One Plan. They want to be involved as much as possible. The SWCD board also was in favor of the Option C boundary.
- Ashley Gallagher, Dakota SWCD & Eagan-Inver Grove Heights WMO, stated that both entities would like to be involved/participate in some way. They were not interested in lead roles or any high level of commitment. Both entities would like to serve on a Technical Advisory Group.
- Daryl Jacobson, Black Dog WMO, stated that they would not be interested in planning efforts, but would like to serve on a Technical Advisory Group as well. The Black Dog WMO already has a plan that they are utilizing.
- Joe Barten, Lower Mississippi River WMO, stated he was in the same boat as Daryl. They do not want to be involved with planning efforts, but would like to serve on a Technical Advisory Group.
- Valerie Grover, Dakota County, stated that they would also like to serve on a Technical Advisory Group, and not participate as a formal partner in planning efforts.
- Jack Distel, Richfield-Bloomington WMO, stated that their organization is small in size and very urban; therefore, do not want to participate in the planning process. They would like to participate on a Technical Advisory Group.
- Diane Lynch, Prior Lake-Spring Lake WD, stated that their board did vote on a resolution to opt out of planning efforts. They just finished their 10-year plan and is already active



in the northern part of the Lower MN River Watershed. They don't have the capacity to join in planning efforts, but would like to serve on Technical Advisory Group.

- Linda Loomis, Lower Minnesota River WD, stated their board also voted on a resolution, and would like to fully participate in planning efforts.
- Mike Wanous, Carver SWCD, they talked on a staff level and determine that they would like to opt out of planning efforts but serve on a Technical Advisory Group. Mike also mentioned that they discussed Option C boundary would make the most sense for moving forward with the watershed.
- Steve Pahs, Rice SWCD, stated that they fully intend to be involved with planning efforts.
- Brad Behrens, Rice County, has not talked with the County Board about participation with this watershed, but is under the assumption that they will be fully involved with planning efforts.
- Scott Walz, Shakopee Mdewakanton Sioux Community, messaged in the group chat that they do not want to participate in planning efforts, but would like to be involved in a Technical Advisory Group.
- Vanessa Strong, Scott County & WMO, was waiting to hear what other individuals say about participation, and that would help influence involvement. Based off of what others have said, stronger potential to be involved with planning efforts. Additionally, Vanessa had sent Holly some additional questions that would also impact their decision on involvement. This lead to a good transition point for group discussion.
- Holly read off the first question of Vanessa's about costs of participating vs. not participating. Holly explained a good portion of the expense of participation is a time commitment. She used examples from the Cannon 1W1P and their involvement. The Planning Work Group/Steering Team (ones who are involved with planning efforts) as well as the Technical Advisory Group met monthly during the planning process. Additionally, there were other meetings that were held for public outreach. The policy committee, which is made up of County Board Members and SWCD Supervisors, met quarterly or more. The time commitment is from multiple individuals, not just the ones involved with the planning efforts. Holly also explained that there is some funding available for staff for administrative and fiscal costs, but it is limited, and will more than likely not cover all the staff time that is involved with planning efforts. This lead into the next point of how watershed based funding is affected when Metro LGUs join. Holly stated that no additional funding is awarded if Metro LGUs participate, the money that is allocated is a set amount that will not change (this is due to the Metro already receiving watershed based funding through a different funding stream).
  - Barb Peichel did comment on the funding comment when Metro LGUs participate and verified that the statement Holly had made was correct.

- Barb also pointed out that there is some flexibility with watershed based funding (ex: partnerships). There may be areas that overlap with plans and would allow for some flexibility on how watershed based funding is spent. If metro entities join, it may increase/expand flexibility in how they can spend watershed based funding.
- Barb also commented about the financial assistance that is provided for administrative and fiscal tasks is not for the entire group, but rather, just for the LGUs that decide to take on those roles. The rest of the group that participates with planning efforts, on a Technical Advisory Group, etc. are attending without receiving any additional funding.
- Barb did also want to make some additional comments about Technical Advisory Groups and what type documentation is needed for LGUs participation.
  - She mentioned that the Technical Advisory Group is made up of LGU staff that are participating in planning efforts along with state agency staff, and more than likely will also include Met Council.
    - Barb stated that ultimately the Policy Committee, which is made of County Board Members and SWCD Supervisors of the LGUs that are participating in planning efforts, decide who is on the Technical Advisory Group. They do not have to include other LGUs that are not within the planning efforts.
      - She also stated that maybe the policy committee decides to create 2 Technical Advisory Groups-one with participating LGUs in planning efforts, state agencies, etc. and one with participating LGUs in planning efforts and non-participating LGUs in planning efforts.
    - Jenny Mocol-Johnson mentioned that the Lower Minnesota River West One Watershed One Plan sends out an agenda to all LGUs and if an LGU thinks a particular topic/item of discussion is of interest to them they will attend that meeting.
  - Barb also pointed out that in order be more competitive in the application for a planning grant for One Watershed One Plan it would be best to get a resolution from each LGU stating their desired level of participation (whether fully participating in planning efforts, opting out completely, or participating in a Technical Advisory Group)
    - This is not a requirement, but makes the application very competitive when applying.
    - Ideally the resolutions should be done before the proposal is submitted.

## Boundaries & Maps

- The next item that was discussed was boundaries. This would be based off of LGUs level of interest in participation as well as how it affects where watershed based funding can be spent.
- Jenny stated that the boundary should be submitted ahead of the application as an official request to BWSR. BWSR will then review the request and provide feedback.
- There was discussion on when a boundary is considered formal; signing of the Memorandum of Agreement or when the watershed planning grant is approved.
  - BWSR stated that once the watershed planning grant is approved that is when there is a formal adoption of the planning boundary.
  - There was confusion on whether a Memorandum of Agreement (MOA) needs to be signed by only the individuals within the planning boundary or within the entire planning area. If the boundary changes or does not change who would be required to sign the MOA?
    - These are follow up question(s) that Holly will send to BWSR.
- The planning boundary involves LGUs located within the boundary, and their policy committee members, but does not include the Technical Advisory Group that is not located within the planning boundary.
  - There was discussion on whether LGUs should participate on a Technical Advisory Group if they are not located within the planning boundary.
    - What would be the benefit of doing this?
- The group asked for clarifying from BWSR on the difference between required and optional when participating in One Watershed One Plan.
  - Jenny further commented on this. She stated that Le Sueur County is required to participate because One Watershed One Plan would replace of their current local water management plan. Rice County/SWCD are not necessarily required to participate because they fall within the guidelines of their County being less than 10% of planning area, and therefore, or not required to participate. Another reason participation maybe be required if there would be a “large gap” in land area that would impact watershed planning efforts. Jenny stated the metro is considered optional because they already have watershed based plans that are being implemented and approved by BWSR.
- The question was asked if the full planning boundary were to stay in place, could the MOA just be signed by Le Sueur and Rice County/SWCD. This way it leaves flexibility for metro counties to spend their watershed based funding.
  - This is another follow up question that Holly will send to BWSR.

- Holly had a question on how the metro's watershed based funding works and how that would affect the group for the Lower Minnesota River Watershed.
  - At first BWSR provided funding for all entities/counties within the 7 county metro area.
  - Now there are 10 watershed funding areas which include a variety of entities, but are more prioritized.
    - These areas decide how the funding is being used.
    - The benefit to metro counties participating in one watershed one plan is they would be eligible for funding through metro plans and the comprehensive plan which can diversify how/where they spend their Watershed based implementation funding.
    - There is an opportunity for shared services this way. Barb provided an example of the Lower Saint Croix had completed education/outreach efforts in the metro and now are trying to focus some education/outreach efforts in non-metro areas.
    - Potentially funding opportunities that is not eligible for metro areas could be eligible.
- Vanessa had asked who determines how the funding is being spent within the watershed when utilizing one watershed one plan funding?
  - Barb stated that ultimately it is up to the policy committee. She also stated that on BWSR's end they open to providing flexibility for spending funding, but again emphasized it is up to the policy committee to determine where funding will go.
- Holly did ask BWSR about the current boundary and wanted to make sure that it was accurate because Kate Moran, from Minnehaha Creek WD, had emailed Holly and stated they were not a part of the planning boundary.
  - Barb stated that Holly should forward her that email and would help address.
- Boundaries that were presented at the February 28<sup>th</sup> meeting (option A-D) were discussed again.
  - Vanessa did comment that Option C does not include Prior Lake-Spring Lake WD. Holly mentioned that she must have overlooked that and will correct this.
  - It was also mentioned to add in the Lower Minnesota River WD to boundaries if they are not already included because they would like to participate in planning efforts.
  - The question was asked where do we, as a group, want to focus efforts? In a small or large area?
    - This needs to be decided yet.

- BWSR thought that if the participation list could be put together of how each LGU wants to participate with one watershed one plan, it would help the group determine/formalize a boundary.
- Ashley stated that each metro plan has different priorities and keeping a broader boundary would allow metro entities to be more flexible in where to spread their watershed based funding.
- Mike Schultz stated that out of all of the options presented (A-D), he was in favor of Option C because it is a more focused boundary. Mike also mentioned that for non-metro entities One Watershed One Plan is a requirement and this is our only option. He also stated that the partnership with the entities located in Option C are already there from previous work/grants that we have worked on in the past.
- BWSR expressed their thoughts about the boundary for the Lower Minnesota River watershed.
  - Barb had stated that there would be an issue with required entities not participating that would leave some gap within the watershed which as a result would lack prioritizing and targeting of projects/practices.
    - BWSR would have strong support to push back on boundary changes if this was the case.
  - When there are optional LGUs involved with a planning boundary, BWSR can't "push back" as hard about boundary changes, because it is optional for those LGUs to participate and they already have a plan put in place.
- Barb asked the question to the group what do we want the plan to focus on? A small or large area?
  - Take into consideration your staff capacity and time that will be needed to complete a plan.
  - If LGU entities want to serve on a TAG what does that mean for each LGU?
    - There are different levels of involvement even when serving on TAG.
- Barb provided an example of the Lower Saint Croix One Watershed One Plan.
  - She stated that we are in a similar situation as that watershed.
  - The Lower Saint Croix ended up deciding to include all metro entities with planning efforts.
    - This made things more complicated and changed the dynamic of the plan.
    - There were some politics involved which added to the complexity.
  - The planning process could have been completed sooner without Metro.

- All of these points are just things to consider. There isn't a right or wrong way, but the group needs to decide what they want to focus on/prioritize and that will help us determine who is involved in planning efforts and a boundary.
- Barb also mentioned that there are numerous ways for LGUs to work together/be involved without being included within the planning effort framework.
  - Could have no TAG and all LGUs come together once a year to meet and discuss how they want to spend watershed based funding.
  - People can be CC'd on Advisory emails but don't necessarily have to participate in conversations and meetings.
- It was emphasized again that a Board Resolution is not required for the application, but in order to make the application stronger, it is preferred.
  - The board resolution can include that an LGU wants to serve in a TAG, but what does that mean for each LGU? Could mean something different for each LGU; therefore, need to specify.

### **Next Steps**

- Holly talked about the next steps with this process and some rough timelines.
- There were a few items that needed follow up/clarification. Some questions were asked in regards to the Memorandum of Agreement and Boundaries during the meeting that BWSR was going to help clarify (these questions are previously mentioned in these minutes).
  - Holly will send these out to the group once she receives answers.
- Also Holly was going to email/contact the individuals that could not attend the meeting today to see what they are thinking as far as participation goes for one watershed one plan.
  - When Holly receives those responses, she will update the participation list and then send out to the entire group. This will help the group and BWSR to further evaluate what that means as far as moving forward.
- Vanessa suggested having a smaller group meeting (those who expressed interest in participating with planning efforts). We can talk about our goals and priorities for the watershed.
- Holly also mentioned she will try to get a few individuals to speak at the next meeting about their experience serving on a TAG and/or at least provide some examples to the group. This may help LGUs decide what their level of involvement will look like.
- Holly stated that it may take a few months to accomplish all of the items above.
  - Once everything is completed, we will work on scheduling another meeting to clarify some the questions that were asked, continue to formalize/complete the

level of participation for each LGU, provide examples of TAGs, and discuss the conversations the smaller group had.

# Technical Memorandum

**To:** Linda Loomis, Administrator  
Lower Minnesota River Watershed District

**From:** Katy Thompson, PE, CFM  
Della Schall Young, CPESC, PMP

**Date:** July 20, 2020

**Re:** CSAH 11 Reconstruction Permit Review (LMRWD No. 2020-110)

---

Carver County (the County) is proposing roadway improvements along County State Aid Highway (CSAH) 11, also known as Jonathan Carver Parkway, from 4<sup>th</sup> Street to Trunk Highway (TH) 212 ramps in Carver County, Minnesota. The project proposes a new four-lane divided roadway to provide additional traffic capacity for growth and to address safety concerns along the corridor. Stormwater management is proposed to be met through a new stormwater pond located in the northwest corner of the project and a second pond in the south end of the project.

The majority of the work is proposed within the Carver County Watershed Management Organization (CCWMO or WMO), but the project proposes several new connections to the existing storm sewer that enters the Lower Minnesota River Watershed District (LMRWD or District) and a new stormwater outfall within the Steep Slopes Overlay District (SSOD) that is proposed to discharge to the Spring Creek gully complex (**Figure 1**, Discharge Point 10 and **Figure 2**). The project also proposes utilizing existing stormwater best management practices (BMPs) and storm sewer within the existing Spring Creek subdivision.

The proposed project is located in the City of Carver (the City) and would normally be subject to municipal review, but the City does not have an approved Municipal Permit with the District and, as a result, the applicant must receive a District permit for triggering the District's Rule B—Erosion and Sediment Control, Rule D—Stormwater Management, and Rule F—Steep Slopes Rule prior to construction.



## Project Summary

<u>Project Name:</u>	CSAH 11 Reconstruction
<u>Purpose:</u>	Lane expansion and safety improvements for CSAH 11
<u>Project Size:</u>	35.2 acres disturbed, 14.82 acres of existing impervious, and 5.0 acres of new impervious
<u>Location:</u>	CSAH 11 from Levi Griffin Road to CSAH 40 in Carver County
<u>Applicable LMRWD Rules:</u>	Rule B—Erosion and Sediment Control Rule D—Stormwater Management Rule E—Steep Slopes
<u>Recommended Board Action:</u>	Incomplete, see recommendations

## Discussion

The District has received the following documents for review:

- Geotechnical Report for Jonathan Carver Parkway (Highway 11) Improvement Project by WSB & Associates dated June 4, 2020
- USDA NRCS Web Soils Survey Hydrologic Soils Group Report dated May 18, 2020
- Carver County WMO Rules Calculator dated June 8, 2020
- Carver County WMO Water Management Application by WSB & Associates dated June 8, 2020
- Existing Conditions Delineation Map by WSB & Associates dated June 3, 2020
- Proposed Conditions Delineation Map by WSB & Associates dated June 3, 2020
- Impervious Area and BMP Layout Map by WSB & Associates dated June 3, 2020
- Existing Conditions HydroCAD Model (2-, 10-, and 100-year runoff) by WSB & Associates dated June 1, 2020
- Existing Conditions HydroCAD Model (10-day runoff) by WSB & Associates dated June 1, 2020
- Proposed Conditions HydroCAD Model (2-, 10-, and 100-year runoff) by WSB & Associates dated June 8, 2020
- Proposed Conditions HydroCAD Model (10-day runoff) by WSB & Associates dated June 8, 2020
- Proposed Conditions HydroCAD Model (NURP-BMP-2) by WSB & Associates dated June 8, 2020
- CSAH 11 Stormwater Management Plan – Impervious Area Analysis by WSB &

Associates dated June 3, 2020

- Excerpts from CSAH 11 Plan Sheets by WSB & Associates dated June 10, 2020
- CSAH 11 Stormwater Management Plan – Discharge Rate Analysis by WSB & Associates dated June 1, 2020

#### Rule B—Erosion and Sediment Control

The District regulates land-disturbing activities that affect one acre or more under Rule B. The proposed project would disturb 35.2 acres, only a portion of which would be within the LMRWD boundary. While the total new impervious area within the LMRWD boundary has not been provided, an estimate of the extent of the project within the boundary confirms it would exceed one acre. The County has provided an erosion and sediment control plan and Stormwater Pollution Prevention Plan (SWPPP). Minor discrepancies exist between the areas proposed in the SWPPP and other project documentation.

A NPDES permit is required for a District permit. Because the applicant proposes to utilize existing BMPs, the applicant must provide evidence that the BMPs have been properly maintained and have adequate capacity to treat the proposed discharges.

#### Rule D—Stormwater Management

The District requires stormwater management for projects that propose to create one acre or more of new impervious area. The applicant provided tables from a stormwater management plan and HydroCAD modeling as part of the permit application, but it is unclear how much of the proposed new impervious area would be located within the District boundary. An estimate of the proposed impervious surface from the documentation provided indicates the one-acre threshold may not be reached, but this should be confirmed by the applicant.

The project will connect to the existing storm sewer within the Spring Creek subdivision at several locations (**Figure 1**):

- 6<sup>th</sup> Street: Connection to existing storm sewer, no BMP treatment, but does not appear to significantly change drainage areas
- White Pine Way: Connection to existing BMP in Spring Creek subdivision, but does not appear to significantly change drainage areas
- Ironwood Drive: New storm sewer outfall and connection to existing storm sewer to the existing Spring Creek subdivision BMP; ultimately discharges to Discharge Point 8
- Discharge Point 10: New storm sewer outfall to Spring Creek gully and SSOD; no BMP treatment
- Red Oak Ridge: Connection to existing storm sewer; no BMP treatment

- BMP-2 Outfall: Connection to existing storm sewer that discharges into the Spring Creek gully system (Discharge Point 11)

The following is a discussion of the documents received and the District requirements.

Rate Control

Section 4.4.1 of Rule D requires that applicants demonstrate no increase in proposed runoff rates when compared to existing conditions. The CSAH 11 Reconstruction would discharge to the Spring Creek gully system at three locations (Discharge Points 8, 10, and 11, shown on **Figure 1**). A summary of the provided HydroCAD modeling appears in **Tables 1** through **3** below. Please note that discharges into the existing storm sewer locations have not been provided.

*Table 1. CSAH 11 to Spring Creek Rate Control Summary (Discharge Point 8)*

<b>EVENT</b>	<b>EXISTING (CFS)</b>	<b>PROPOSED (CFS)</b>	<b>CHANGE (CFS)</b>
2-YR / 24-HR	2.06	2.12	+0.06
10-YR / 24-HR	3.58	3.60	+0.02
100-YR / 24-HR	5.77	5.76	-0.01
10-DAY SNOW	3.14	3.10	-0.04

*Table 2. CSAH 11 to Spring Creek Rate Control Summary (Discharge Point 10)*

<b>EVENT</b>	<b>EXISTING (CFS)</b>	<b>PROPOSED (CFS)</b>	<b>CHANGE (CFS)</b>
2-YR / 24-HR	7.24	6.72	-0.52
10-YR / 24-HR	14.45	13.06	-1.39
100-YR / 24-HR	32.44	28.74	-3.70
10-DAY SNOW	3.57	3.18	-0.39

*Table 3. CSAH 11 to Spring Creek Rate Control Summary (Discharge Point 11)*

<b>EVENT</b>	<b>EXISTING (CFS)</b>	<b>PROPOSED (CFS)</b>	<b>CHANGE (CFS)</b>
2-YR / 24-HR	23.65	8.86 / 11.29	-14.79 / -12.36
10-YR / 24-HR	42.13	20.05 / 21.03	-22.08 / -21.10
100-YR / 24-HR	84.69	31.64 / 31.98	-53.05 / -52.71
10-DAY SNOW	6.85	10.32 / 10.42	+3.47 / +3.57

Applicant should verify that the HydroCAD model reflects the current design conditions because the proposed discharge rates at Point 11 provided in the Stormwater Management Plan – Discharge Rate Analysis table do not match and both are shown in **Table 3** above.

Minor increases are shown at Discharge Point 8 for the smaller 2- and 10-year events. The District does not require the 10-day snowmelt runoff results, but the applicant is showing an increase at Discharge Point 11 under the snowmelt runoff design conditions.

The applicant proposes to utilize existing BMPs located in the Spring Creek subdivision for rate control. From the information provided, there would be minor increases in rate to the existing BMPs at Discharge Point 8 while the existing BMP at Discharge Point 10 would experience a slight reduction.

High water elevations on the existing BMPs at Discharge Point 8 also show a slight decrease of -0.01 ft ([Table 4](#)).

*Table 4. CSAH 11 Existing BMPs 100-Year High Water Level Summary*

<b>BMP</b>	<b>EXISTING</b>	<b>PROPOSED</b>	<b>CHANGE</b>
Discharge Pt. 8 (SCr 16.1)	943.53	943.52	-0.01
Discharge Pt. 8 (SCr 16.2)	943.53	943.52	-0.01

Volume Reduction

Section 4.4.2 of Rule D requires volume reduction for post-construction stormwater runoff volume for projects that create more than one acre of impervious surface. It is unclear how much new impervious surface would be generated within the LMRWD boundary, but the applicant is proposing to construct two new BMPs with iron-enhanced sand filters, suggesting that infiltration is not feasible on the site. Those new BMPs would be located entirely within the CCWMO and would be subject to their requirements.

The applicant should provide additional information regarding the use of the existing BMPs located within LMRWD and indicate if the applicant intends to claim any reduction credits from those features.

Water Quality

Section 4.4.3 of Rule D requires projects that create more than one acre of impervious surface to provide evidence that no net increase in total phosphorus or total suspended solids in the receiving waters would result from the project.

It is unclear how much new impervious surface would be generated within the LMRWD boundary, but the applicant is proposing to construct two new BMPs, an iron-enhanced sand filter and a wet stormwater bond with iron-enhanced sand filter benches. Those BMPs would be located entirely within the CCWMO and

would be subject to their requirements.

The applicant should provide additional information regarding the use of the existing BMPs located within LMRWD and indicate whether the applicant intends to claim any water quality treatment from those features.

#### Rule F—Steep Slopes Rule

The District regulates land-disturbing activities within the SSOD and requires a permit for activities that involve the excavation of 50 cubic yards or more of earth or the displacement or removal of 5,000 square feet or more of surface area or vegetation within the overlay area. The project appears to be subject to this rule at Discharge Point 10 (**Figure 1**). The applicant must provide documentation that a qualified professional or professional engineer registered in the state of Minnesota has certified this area as suitable for the proposed activities, structures, or uses resulting from the construction.

There appears to be a new proposed stormwater discharge point in the SSOD, discharging stormwater from a new pedestrian trail and underpass into the Spring Creek gully system (**Figure 2**). This gully has recently been surveyed (L144, **Figure 2**) and shows signs of significant erosion at the existing culvert outfall (see attached *Gully L144 Preliminary Condition Assessment*).

It is unclear from the provided construction plans, maps, and HydroCAD modeling if the CSAH 11 project is adding an additional outfall or reconstructing the existing outfall in the Spring Creek gully. Regardless, the applicant must provide additional information on that portion of the project to ensure the stability of the slopes and prevent further gully erosion from this project.

Comments have been provided on the attached construction plan excerpts.

#### **Recommendations**

The project is located on the boundary with the Carver County WMO, and the majority of the proposed improvements and stormwater BMPs are located there, as well. We recommend deferring permitting authority to CCWMO for LMRWD *Rules B—Erosion and Sediment Control* and *D—Stormwater Management* but retain permitting authority for *Rule F—Steep Slopes Rule*.

To complete our review, we require the following:

- Complete the online permit application
- Copy of the NPDES permit
- Documentation clarifying the use of existing BMPs in the Spring Creek subdivision; documentation proving the applicant holds the legal rights necessary

to discharge to any off-site stormwater facility used for compliance and that those facilities are subject to an executed maintenance agreement

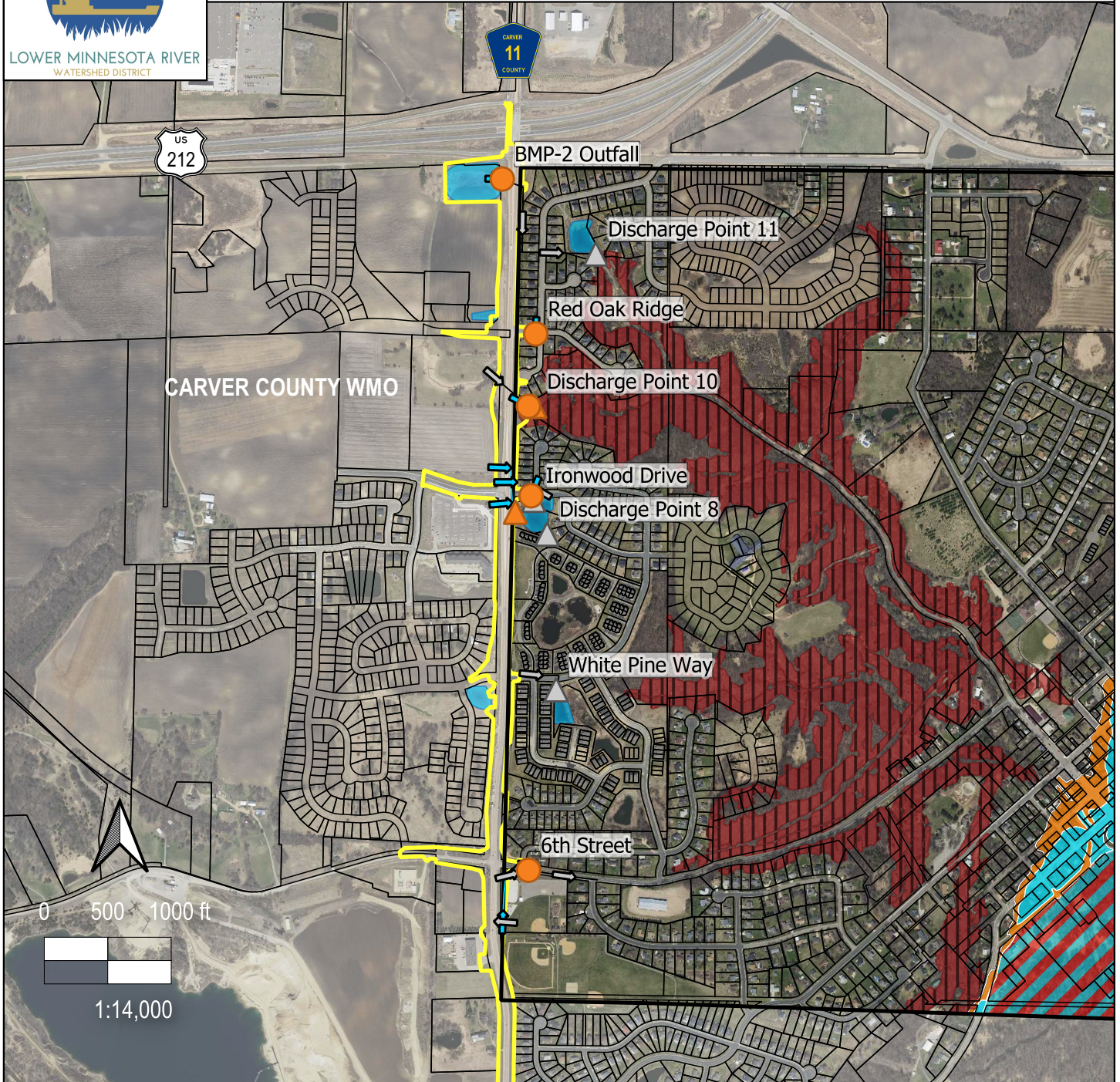
- Documentation confirming the extent of disturbance within the LMRWD boundary, including the new impervious surface created by this project
- Certification by a professional engineer that slopes are suitable to withstand the proposed construction activities within the Steep Slopes Overlay District.
- Additional information on how Discharge Point 10 would address existing erosion issues or prevent further gully erosion
- Address comments from attached plan sheets
- Documentation of project approval from the Carver County Watershed Management Organization and compliance with water quality and volume control requirements

Attachments:

- Figure 1. Proposed CSAH 11 Reconstruction Project Location Map
- Figure 2. Proposed CSAH 11 Trail and Steep Slopes Overlay District
- Gully L144 Preliminary Condition Assessment Worksheet
- Young Environmental Construction Plan Comments for Discharge Point 10

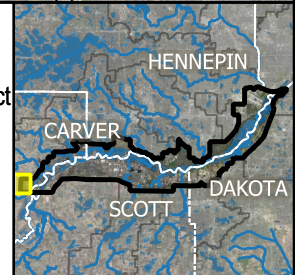


Figure 1: CSAH 11 Reconstruction Project Location



LEGEND

- |                    |  |                               |
|--------------------|--|-------------------------------|
| Project Area       | Existing Storm Sewer Outfall           | Steep Slopes Overlay District |
| Stormwater BMPs    | New Outfall                            | Carver Co. Floodplain         |
| LMRWD Boundary     | New Connection to Existing Storm Sewer | 100-year Floodplain           |
| Carver Co. Parcels | Existing Storm Sewer                   | Floodway                      |
|                    | New Storm Sewer                        | 500-year Floodplain           |



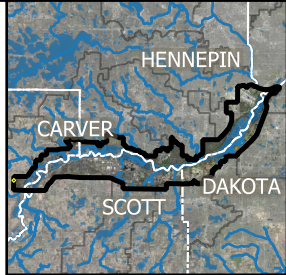


# Figure 2: CSAH 11 Proposed Discharge Point 10

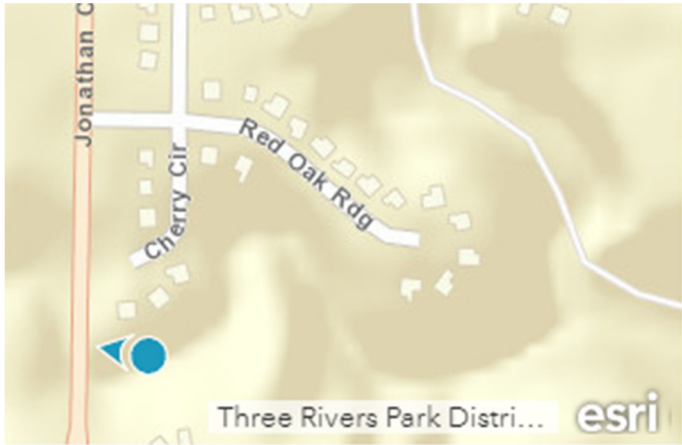


### LEGEND

- Project Area
- LMRWD Boundary
- Proposed Underpass/Trail
- Existing Storm Sewer
- Proposed Storm Sewer
- Carver Co. Parcels
- Steep Slopes Overlay District
- Existing Storm Sewer Outfall
- New Connection to Existing Storm Sewer
- Carver Co. 2-ft Contours
- New Outfall
- Gully L144 Location





<b>GULLY ID:</b> L144	
<b>PREVIOUS ID:</b> 1165	
<b>SURVEY DATE:</b> 6/25/2020 4:35:13 PM	
<b>LOCATION:</b> Carver	
<b>TYPE OF SITE:</b> Combination	
<b>SITE SUMMARY:</b> Sunny	
Storm in past 24 hours: No	Gully Head UTM Estimate: 4957736N 449223E
Noted problem indicators were: pistol butted/leaning trees, undercut/overhanging banks, flattened/slumping banks, vertical and/or bare banks (incision), loss of bank vegetation, degradation	

GULLY INFORMATION		PIPE INFORMATION	
EROSION POTENTIAL:	High	INTERIOR PIPE DIAMETER:	24"-48"
GULLY DEPTH:	Medium: 3'-15'	PIPE MATERIAL	Concrete
BOTTOM WIDTH:	Wide: >5'	APRON CONDITION:	yes, Fair
TOP WIDTH:	Wide, >10'	EROSION LOCATION:	Outlet
BOTTOM CONDITION:	Armored	OUTLET CONDITION:	Erosion, Scour
BANK CONDITION:	Some Vegetation	ILLICIT DISCHARGE	None,
CHANNEL SLOPE:	Steep	WATER PRESENCE	Moderate, Slow
GULLY SHAPE:	U-Shaped	<b>PIPE NOTES:</b>  Additional tiling pipe feeds into outlet area Potential stream being piped underneath developed areas, aquatic plants seen flowing out of the water	
GULLY MATERIAL:	Sand		
APPARENT CAUSES:			
WATER PRESENCE	Slow, Moderate		
SEEP	No		
<b>GULLY NOTES:</b> <ul style="list-style-type: none"> <li>• Long &gt;100'</li> <li>• A couple fallen trees, not too many</li> <li>• Apparent causes were:               <ul style="list-style-type: none"> <li>• Unstable drainage feature entering</li> <li>• Very flat past initial steep knickpoint</li> <li>• Deep unknown, but this section fed by pipe outlet</li> </ul> </li> </ul>			

Figure 1. Scour on the right bank of the outlet pipe apron.



Figure 2. Looking upstream at left bank and actively leaning slump.



*Figure 3. Looking upstream at knickpoint below the pipe outfall, scale, undercut banks all around the perimeter*



*Figure 4. Looking upstream at knickpoint*



*Figure 5. Left bank knickpoint downstream of pipe outfall.*



*Figure 6. Looking downstream at left bank overhang.*





## LOWER MINNESOTA RIVER WATERSHED DISTRICT PROJECT REVIEW

Project ID	<input type="text" value="2020_0110"/>	Authorization Agent	<input type="text" value="Nicole Schmidt"/>
Project Name	<input type="text" value="Jonathan Carver Parkway/CSAH 11 Improvements"/>	Email Address	<input type="text" value="carverstreets@bolton-menk.com"/>
Organization	<input type="text" value="Carver County Public Works"/>	Phone Number	<input type="text" value="9524665200"/>

Notes

### *Project Summary*

Anticipated start date	<input type="text" value="6/26/2020 10:54:19 AM"/>	Date received	<input type="text" value="6/24/2020"/>
Project location	<input type="text" value="CSAH 11 from Levi Griffin R"/>	Project map included?	<input checked="" type="checkbox"/>
Project acres	<input type="text" value="35.37"/>	Is the project in an unincorporated area?	<input type="checkbox"/>
Total disturbed acres	<input type="text" value="32.7"/>	Is it located in a High Value Resource Area	<input type="checkbox"/>
New impervious acres	<input type="text" value="5"/>	Is it located in a Steep Slope Overlay District	<input checked="" type="checkbox"/>
Local Partners	<input type="text" value="Carver County"/>	Other Sensitive Area	

### Project Description

Carver County (County) is proposing roadway improvements along County State Aid Highway (CSAH) 11 (also known as Jonathan Carver Parkway) from 4th Street to Trunk Highway (TH) 212 ramps in Carver County, Minnesota. The project proposes a new four-lane divided roadway to provide additional traffic capacity for future growth and to address safety concerns along the corridor. Stormwater management is proposed to be met through a new stormwater pond located in the northwest corner of the project and a second pond in the south end of the project.

### Additional Notes

#### Review Status

Is this a preliminary review?	<input checked="" type="checkbox"/>
Is this a permit review?	<input checked="" type="checkbox"/>
Does this project require a technical review?	<input type="checkbox"/>

#### Project Status

Project is pending	<input type="checkbox"/>
Project is active	<input type="checkbox"/>
Project has been archived	<input type="checkbox"/>

## *Erosion and Sediment Control*

This project triggers one or more thresholds for this rule.

<u>Triggers</u>		<u>Criteria</u>	
Disturbs one acre plus	<input checked="" type="checkbox"/>	Erosion and Sediment Control Plan	<input checked="" type="checkbox"/>
Located within the HVRA Overlay District	<input type="checkbox"/>	Inspection and maintenance addressed	<input type="checkbox"/>
Meets the HVRA threshold	<input type="checkbox"/>	NPDES/SDS General Construction Permit documentation	<input type="checkbox"/>

The documentation requirements for this rule have not been met. A review cannot be completed until all required documentation has been submitted.

Additional Notes

Need NPDES permit and maintenance agreement

## *Floodplain Drainage Alteration*

This rule does not apply.

<u>Triggers</u>			
Changes in water surface elevation of floodplain	<input type="checkbox"/>	Calculations by a professional engineer demonstrating no decrease to conveyance	<input type="checkbox"/>
<i>If yes,</i> Compensatory storage equal or greater than volume of fill	<input type="checkbox"/>	Conveyance capacity decrease below 100yr high water elevation	<input type="checkbox"/>
<i>If no,</i> No-rise certification by a professional engineer	<input type="checkbox"/>	Temporary placement of fill	<input type="checkbox"/>
<u>Criteria</u>		Adverse impacts to water quality, habitat, or fisheries	<input type="checkbox"/>
Net decrease of storage capacity OR increase in 100yr elevation	<input type="checkbox"/>	New structures have 2ft+ between lowest enclosed area's floor and 100yr high water elevation	<input type="checkbox"/>
Will floodplain storage be created	<input type="checkbox"/>		

Additional Notes



## Stormwater Management

This rule does not apply.

Type of project Linear

### Triggers

One acre or more of impervious surface

Are trout streams protected

### **HVRA Overlay District**

Located within the HVRA Overlay District

Rate control exceeded for 1, 2, 10, and 100yr 24-hour event

*If yes,* Meets the HVRA threshold

Projects with 1+ acres of new impervious: are MPCA's Construction General Permit

### Criteria

Post-construction runoff rates exceed existing rates for 1, 2, 10, and 100yr 24-hour events?

Net increase of TP

Net increase of TSS

New Development: the post-construction runoff volume retained onsite equal 1.1 inches of runoff from impervious surfaces

Is maintenance adequately addressed

Project will result in a net decrease of TP and TSS

Redevelopment: the project will capture and retain onsite 1.1 inches from new/fully reconstructed impervious surface

Volume control requirements sufficiently addressed

Linear: the site will capture and retain (a) 0.55 inches of runoff from new/fully reconstructed impervious, or (b) 1.1 inches of runoff from the net increase in impervious area

The documentation requirements for this rule have not been met. A review cannot be completed until all required documentation has been submitted.

Alternative Infiltration Measures

Additional Notes

It is not clear if the project meets the 1-acre threshold for new impervious within the LMRWD. Applicant needs to provide additional information to complete review.

## *Steep Slopes*

This project triggers one or more thresholds for this rule.

### Triggers

- Is the project in the Steep Slopes Overlay District
- Excavation of 50 cubic yards+ of earth
- Displacement of 5,000 sq. ft+ of earth
- Vegetation removal or displacement
- Activities that require LGU permits

### Criteria

- Has the project been certified by a professional engineer
- Adverse impact to waterbodies
- Unstable slope conditions
- Degradation of water quality
- Preservation of existing hydrology
- New discharge points along slope

The submission included the required documentation for this rule.

### Additional Notes

It is unclear if the project is proposing a new discharge point or utilizing the existing culvert outfall, however storm sewer and pedestrian trail construction is proposed within the SSOD. Applicant needs to provide additional info to complete review.

# NPDES Inspections

Submitted by: chentges@co.carver.mn.us\_carver

Submitted time: Jul 1, 2020, 11:51:02 AM

Inspection Date

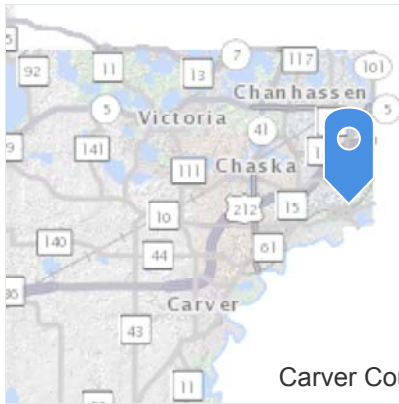
**Jul 1, 2020**

Project Name

**CSAH 101 Improvement**

Project Location

**Lat: 44.81567 Lon: -93.53705**



City

**Chanhassen**

Preferred ID

**C00056158**

Inspector

**Chip Hentges, Carver SWCD, 952.466.5230**

Weather Conditions

**Partly Cloudy**

Site Conditions

**Saturated**

Comments

**Project took on a severe rain event from 6/ 28/29th. Overall project took the storm very well. Areas of concern is the ravine that flows to the west off the project site and down on the bottom where it leaves through the surface ditch to the east.**

Status: Permit Coverage (Minn. R. 7090.2010)

**Compliant**

Status: EC1 Exposed Soils (Permit Part IV.B.2)

**Under Review**

Inspection Result: EC1 Exposed Soils

**Contractor will need to touch up some areas that have exposed soils that have not been touched for 7 days and will not be disturbed in the near future**

Corrective Action: EC1 Exposed Soils

**Stabilize all areas that will not be disturbed as indicated above.**

Add photo pertaining to EC1 Exposed Soils



field\_102-7f966f9e1caf43409616ac794d4e37ec.JPG

Status: EC2 Ditch Bottoms (Permit Part IV.B.3)

**Non Compliant**

Inspection Result: EC2 Ditch Bottoms

**Ditch bottom on bottom end that drains water to the east that leaves the site must be stabilized with blanket**

Corrective Action: EC2 Ditch Bottoms

**Stabilize ditch bottom immediatly**

Add a photo pertaining to EC2 Ditch Bottoms



field\_34-16905c375b63444f97987f130fad99a2.JPG

Status: EC3 Energy Dissipation (Permit Part IV .B .4)

**Not Inspected**

Status: SC1: Perimeter Control (Permit Part IV .C .2) & M1: Perimeter Control Maintenance (Permit Part IV .E .4 .a)

**Under Review**

Inspection Result: SC1 Perimeter Control & M1 Perimeter Maintenance

**In areas where perimeter controls did not hold up and or did not function as planned, will need to be upgraded.**

Corrective Action: SC1 Perimeter Control & M1 Perimeter Maintenance

**All perimeter controls that failed will need to be upgraded. Bio logs and Silt fence are not options in a redundant form. Rock, Berms and or other means or methods should be installed.**

Add a photo pertaining to SC1 Perimeter Control & M1 Perimeter Maintenance



**field\_25-84e7858695c943c18ba2bf64a84f18b6.JPG**

Status: SC2: Inlet Protection (Permit Part IV .C .4) & M2: Inlet Maintenance (Permit Part IV .E .4)

**Not Inspected**

Status: SC3: Vehicle Tracking (Permit Part IV.C.6) & M3: Sediment Tracking (Permit Part IV.E.4.d)

**Under Review**

Inspection Result: SC3 Vehicle Tracking & M3 Sediment Tracking

**Maintain street sweeping as required**

Status: SC4: Stock Piles (Permit Part IV.C.6)

**Not Inspected**

Status: SC5: Dewatering (Permit Part IV.D)

**Compliant**

Status: SC6: Temporary Sediment Ponds (Permit Part III.B)

**Not Inspected**

Status: SC 7: Infiltration Areas (Permit Part IV.E.5)

**Not Inspected**

Status: SC8: Other Sediment Controls (Permit Part IV.C.1)

**Not Inspected**

Status: P1: Solid Waste (Permit Part IV.F.1)

**Not Inspected**

Status: P2: Hazardous Materials (Permit Part IV.F.2)

**Not Inspected**

Status: P3: Concrete Washout (Permit Part IV.F.4)

**Not Inspected**

Status: SW1: Discharges to Surface Waters (Minn. R. 7050.0210)

**Not Inspected**

SW2: Removal of Sediment from Surface Waters (Permit Part IV.E.4.c.)

**Not Inspected**

Status: D1: Stormwater Pollution Prevention Plan (Permit Part III.D)

**Compliant**

Status: D2: Stormwater Pollution Prevention Plan (Permit Part III.A)

**Compliant**



D3: Inspection and Maintenance Records (Permit Parts III.D & IV.E)

**Compliant**

Overall site status

**Compliant**

# NPDES Inspections

Submitted by: chentges@co.carver.mn.us\_carver

Submitted time: Aug 11, 2020, 3:35:59 PM

Inspection Date

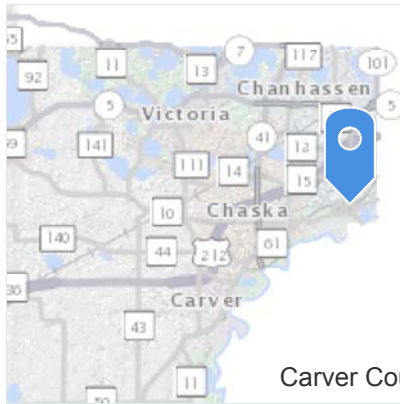
**Aug 11, 2020**

Project Name

**CSAH 101**

Project Location

**Lat: 44.81344 Lon: -93.53865**



City

**Chanhassen**

Preferred ID

**C00056158**

Inspector

**Chip Hentges, Carver SWCD, 952.466.5230**

## Weather Conditions

**Sunny**

## Site Conditions

**Saturated**

## Comments

**Overall, with the amount of rain that fell on the project site, the site was well contained on the bottom end. Contractor had removed most of the accumulated sediment on the roadway and in the underpass. Areas that topsoil was placed held up.**

Status: Permit Coverage (Minn. R. 7090.2010)

**Compliant**

Status: EC1 Exposed Soils (Permit Part IV.B.2)

**Under Review**

Inspection Result: EC1 Exposed Soils

**Site is active. Contractor starting to place topsoil on slopes with plans to seed and stabilize these areas by the end of the month. Slopes have been temporary stabilized prior to placement of topsoil. Topsoil placed areas held up extremely well.**

Corrective Action: EC1 Exposed Soils

**As slopes are graded to finish grade place topsoil immediately**

Add photo pertaining to EC1 Exposed Soils



**Under Review**

Inspection Result: EC2 Ditch Bottoms

**Bottom ditch area next to 61 was overwhelmed with sediment.**

Corrective Action: EC2 Ditch Bottoms

**Contractor has identified this area to be cleaned out as conditions allow.**

Add a photo pertaining to EC2 Ditch Bottoms



**Not Inspected**

Status: SC1: Perimeter Control (Permit Part IV .C .2) & M1: Perimeter Control Maintenance (Permit Part IV .E .4 .a)

**Under Review**

Inspection Result: SC1 Perimeter Control & M1 Perimeter Maintenance

**Perimeter controls were overwhelmed in some areas but held up rather good in others**

Corrective Action: SC1 Perimeter Control & M1 Perimeter Maintenance

**Contractor has been working on cleaning up and fixing all perimeter controls**

Add a photo pertaining to SC1 Perimeter Control & M1 Perimeter Maintenance



aintenance (Permit Part IV .E .4)

**Compliant**

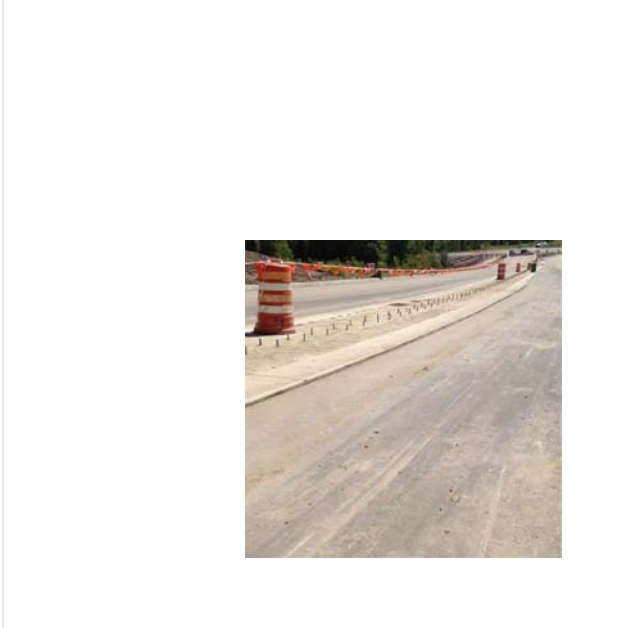
Add a photo pertaining to SC2 Inlet Protection & M2 Inlet Maintenance



Status: SC3: Vehicle Tracking (Permit Part IV.C.6) & M3: Sediment Tracking (Permit Part IV.E.4.d)

**Compliant**

Add photo pertaining to SC3 Vehicle Tracking & M3 Sediment Tracking



field\_103-98b9d7e26fdc4bf1ba462c7fa61d89c7.JPG

Status: SC4: Stock Piles (Permit Part IV.C.6)

**Not Inspected**

Status: SC5: Dewatering (Permit Part IV.D)

**Under Review**

Inspection Result: SC5 Dewatering

**Dewatering of the Stormwater basin was being completed, and was clean leaving the site. Bridge work dewatering was pumped to the sediment basin.**

Corrective Action: SC5 Dewatering

**Maintain dewatering by checking clarity of water prior to discharge to Bluff Creek.**

Status: SC6: Temporary Sediment Ponds (Permit Part III.B)

**Compliant**

Status: SC 7: Infiltration Areas (Permit Part IV.E.5)

**Not Inspected**

Status: SC8: Other Sediment Controls (Permit Part IV.C.1)

**Under Review**

Inspection Result: SC8 Other Sediment Controls

**Rock check dams in ravine held sediment**

Corrective Action: SC8 Other Sediment Controls

**Contractor has plans to clean rock check dams as they are able to get to them.**

Status: P1: Solid Waste (Permit Part IV.F.1)

**Not Inspected**

Status: P2: Hazardous Materials (Permit Part IV.F.2)

**Not Inspected**

Status: P3: Concrete Washout (Permit Part IV.F.4)

**Not Inspected**

Status: SW1: Discharges to Surface Waters (Minn. R. 7050.0210)

**Not Inspected**

SW2: Removal of Sediment from Surface Waters (Permit Part IV.E.4.c.)

**Not Inspected**



Status: D1: Stormwater Pollution Prevention Plan (Permit Part III.D)

**Compliant**

Status: D2: Stormwater Pollution Prevention Plan (Permit Part III.A)

**Not Inspected**

D3: Inspection and Maintenance Records (Permit Parts III.D & IV.E)

**Compliant**

Overall site status

**Compliant**