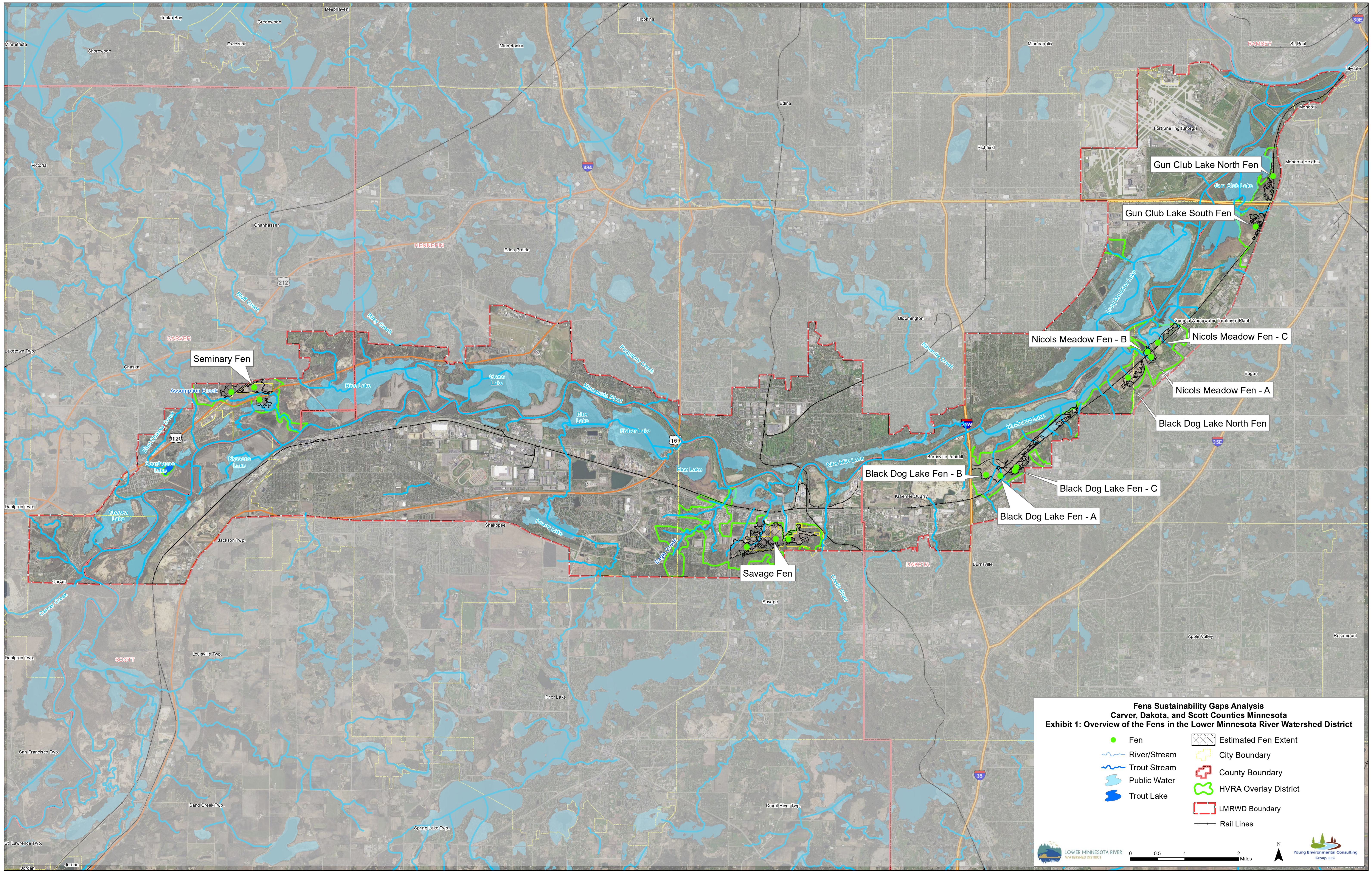


## **EXHIBITS**





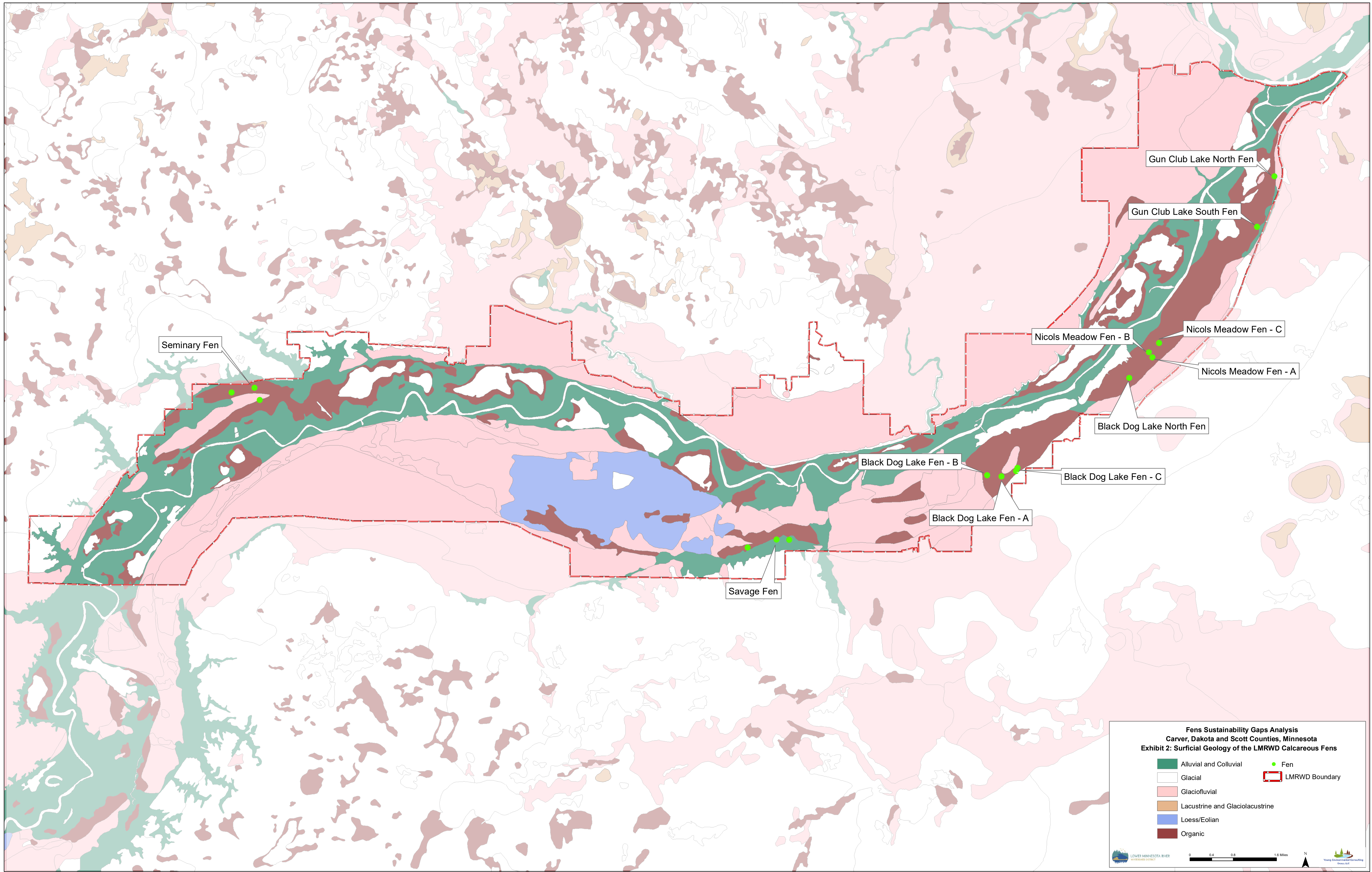
**Fens Sustainability Gaps Analysis**  
**Carver, Dakota, and Scott Counties Minnesota**  
**Exhibit 1: Overview of the Fens in the Lower Minnesota River Watershed District**

Fen	Estimated Fen Extent
River/Stream	City Boundary
Trout Stream	County Boundary
Public Water	HVRA Overlay District
Trout Lake	LMRWD Boundary
	Rail Lines

LOWER MINNESOTA RIVER WATERSHED DISTRICT  
 Young Environmental Consulting Group, LLC

Source - MN Geospatial Commons (MNDNR and MNDOT)





Source - MN Geospatial Commons (MNDNR), USGS

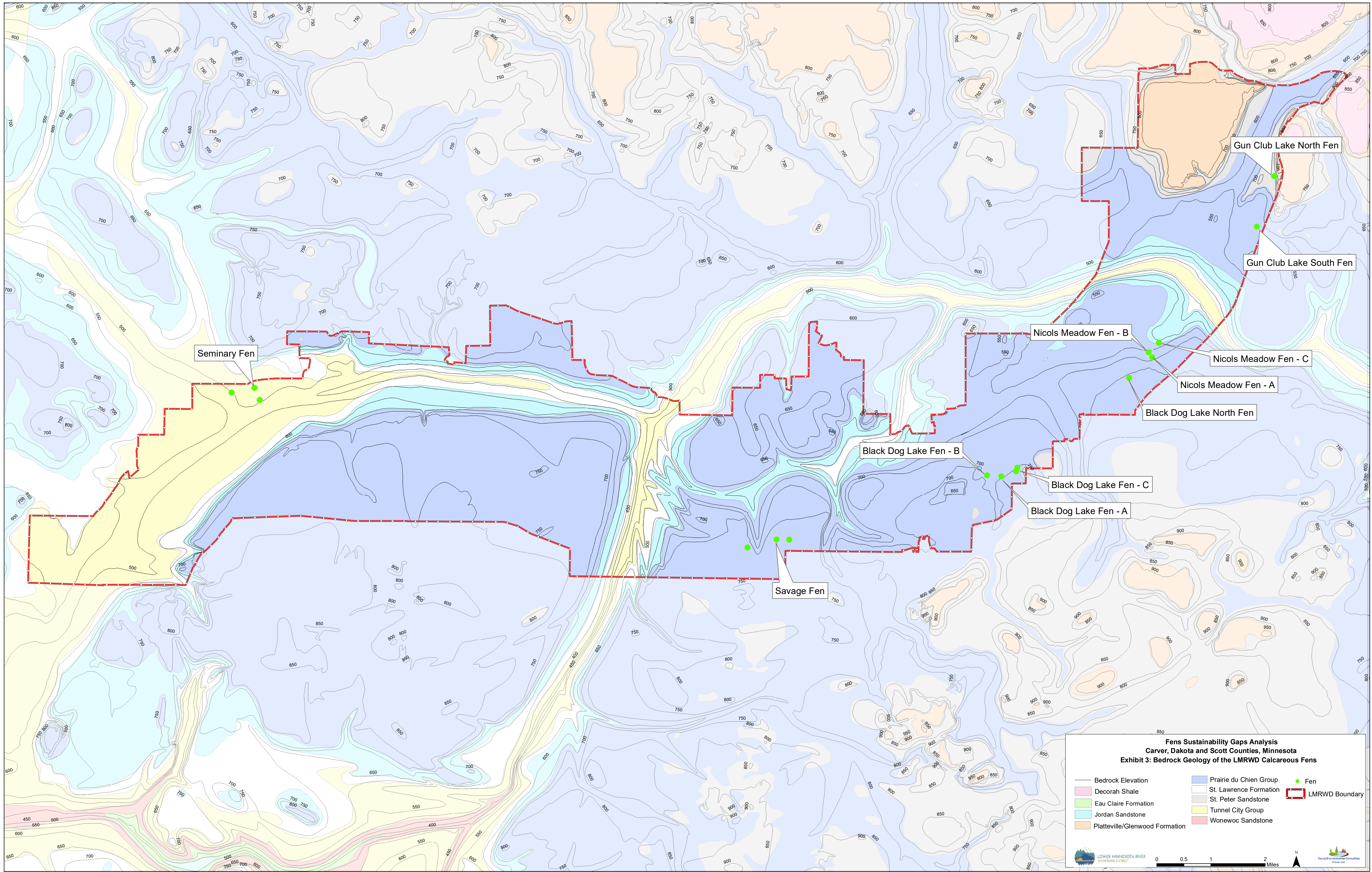
LOWER MINNESOTA RIVER WATERSHED DISTRICT

0 0.4 0.8 1.6 Miles

N


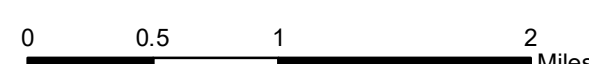


Young Environmental Consulting Group, LLC





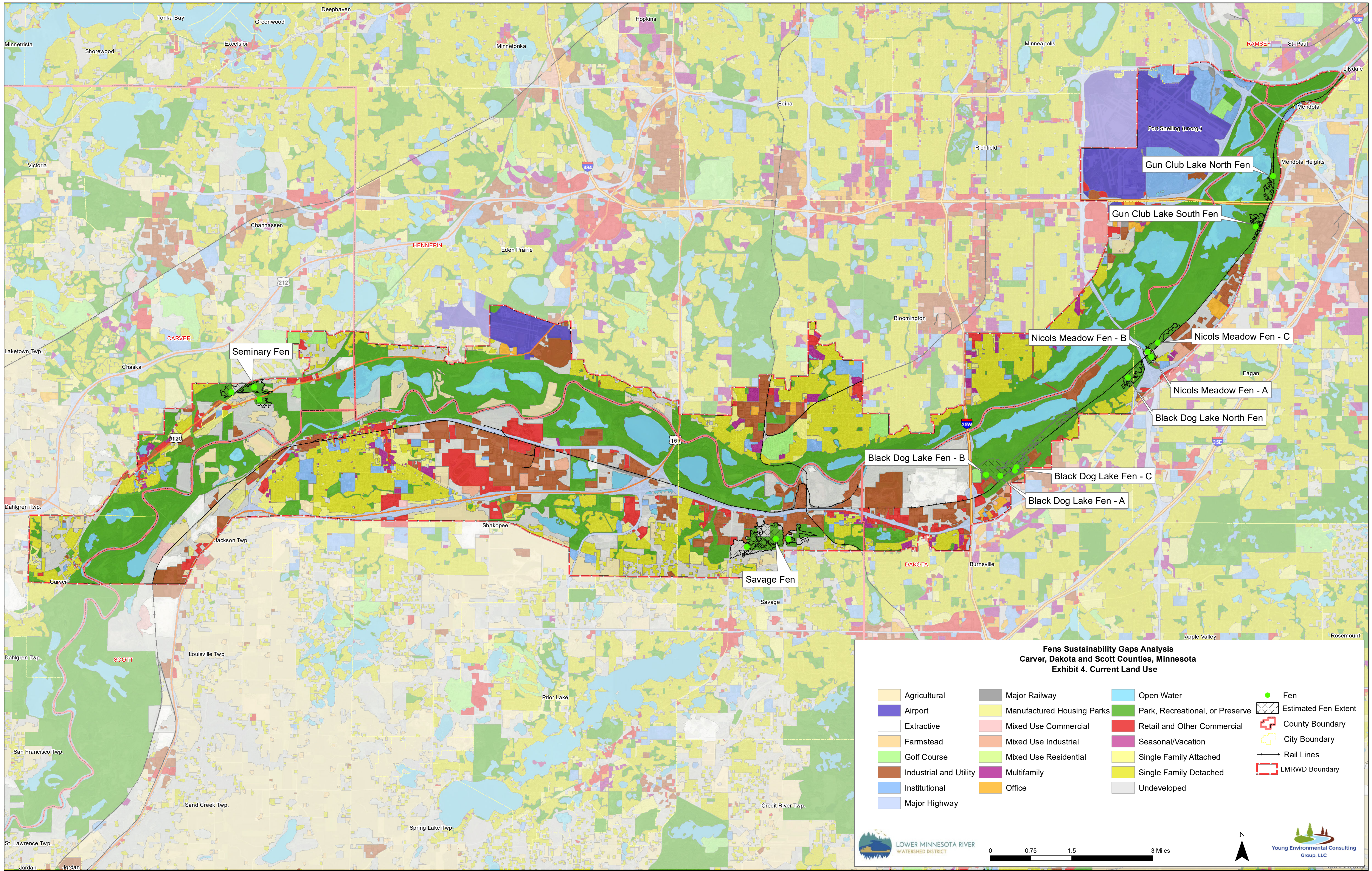
**Fens Sustainability Gaps Analysis**  
**Carver, Dakota and Scott Counties, Minnesota**  
**Exhibit 3: Bedrock Geology of the LMRWD Calcareous Fens**

— Bedrock Elevation	■ Prairie du Chien Group	● Fen
■ Decorah Shale	■ St. Lawrence Formation	▭ LMRWD Boundary
■ Eau Claire Formation	■ St. Peter Sandstone	
■ Jordan Sandstone	■ Tunnel City Group	
■ Platteville/Glenwood Formation	■ Wonewoc Sandstone	

Source - MN Geospatial Commons (MNDNR), USGS





Source - MN Geospatial Commons (MNDNR, MNDOT, Metropolitan Council)



0 0.75 1.5 3 Miles





